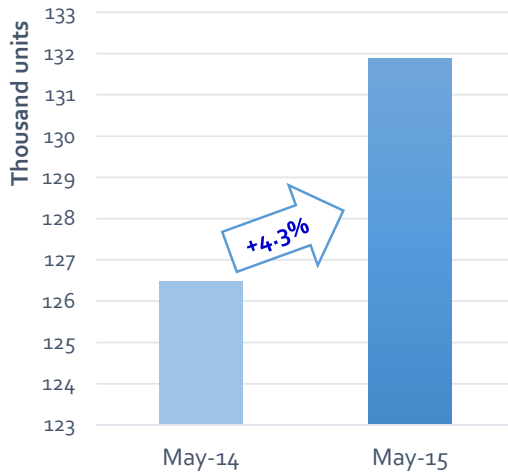


PRESS EMBARGO: 8.00 AM (6.00 AM GMT), 26 June 2015

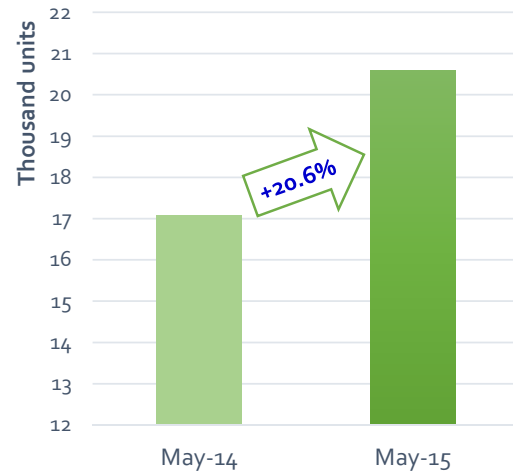
**NEW COMMERCIAL VEHICLE REGISTRATIONS
EUROPEAN UNION¹**

May 2015

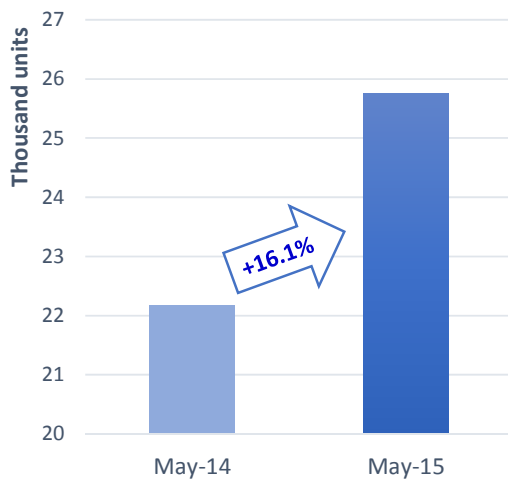
LCVs up to 3.5t



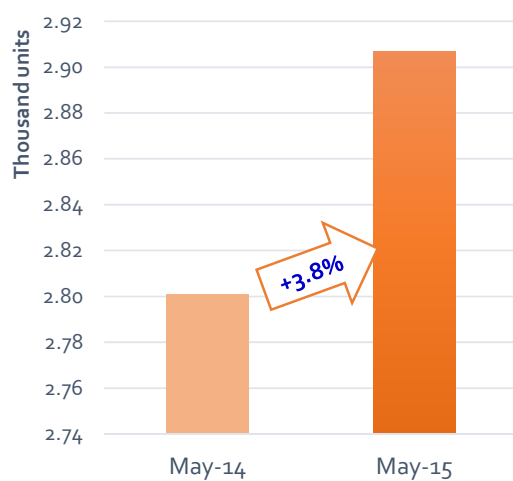
HCVs of 16t and over



Medium & heavy CVs over 3.5t



Buses & coaches over 3.5t



Next Press Release: Tuesday 28 July 2015

¹ Data for Malta unavailable

NEW COMMERCIAL VEHICLE registrations: +11.6% over five months; +6.0% in May

Total new Commercial Vehicles

In May 2015, demand for new commercial vehicles in the EU increased (+6.0%) for the fifth consecutive month, totalling 160,550 units. Growth was sustained across all commercial vehicle segments. Results were diverse among the major markets, with Germany (-9.1%) and France (-5.6%) facing a downturn, while Spain (+30.1%) and the UK (+17.4%) posted double-digit growth.

Five months into the year, the EU market expanded (+11.6%), totalling 832,782 commercial vehicles. During the same period, Spain (+34.1%), the UK (+22.6%) Italy (+7.5%) and Germany (+3.4%) all posted growth, while France recorded a slight decline (-1.0%).

New Light Commercial Vehicles up to 3.5t – vans

In May 2015, new registrations of light commercial vehicles totalled 131,883 units, up (+4.3%) compared to May 2014. This marked the twenty-first consecutive month of growth in this segment. Spain (+24.3%), the UK (+15.1%), Italy (+3.0%) contributed positively to the upturn, while new van registrations fell in France (-8.5%) and Germany (-10.0%).

From January to May 2015, 690,803 new vans were registered in the EU (+11.4%). Spain (+33.5%), the UK (+20.7%), Italy (+7.1%) and Germany (+6.1%) saw their demand for vans increase over this period, while France recorded a slight decline (-1.5%).

New Heavy Commercial Vehicles over 16t (excluding Heavy Buses & Coaches) – heavy trucks

May 2015 results showed an increase in new heavy truck registrations (+20.6%), totalling 20,597 units. Spain (+92.0%) largely contributed to this positive outcome, sustained by the government "PIMA Transporte" program to incentivise the purchase of commercial vehicles, followed by the UK (+37.8%), France (+28.0%) and Italy (+23.4%) which also posted double-digit growth.

Five months into the year, the EU market grew (+17.8%), reaching 102,682 units. The UK (+62.6%), Spain (+37.2%), Italy (+14.3%) and France (+4.4%) saw their demand for heavy trucks increase, while the German market remained stable (+0.8%).

New Medium & Heavy Commercial Vehicles over 3.5t (excluding Buses & Coaches) – trucks

In May 2015, 25,760 new trucks were registered in the EU, up (+16.1%) compared to May 2014. Among major markets Spain (+89.6%), the UK (+35.9%), France (+25.9%) and Italy (+14.2%) posted double-digit growth, while Germany (-6.8%) performed less well than in May 2014.

From January to May 2015, results for trucks were diverse, with Germany (-2.9%) performing less well than in the same period last year, while the UK (+44.5%) Spain (+34.0%) and Italy (+10.7%) recorded significant increases. Overall, the EU registered 126,876 new trucks (+12.8%).

New Buses & Coaches over 3.5t

In May 2015, new bus and coach registrations increased (+3.8%) compared to May 2014, totalling 2,907 units. Spain (+68.7%), the UK (+26.4%) and France (+14.4%) mainly contributed to this positive result, while Germany (-10.5%) and Italy (-34.5%) performed less well than in May 2014.

From January to May 2015, the EU market increased (+14.4%), totalling 15,103 new buses and coaches. Demand was primarily driven by Spain (+73.1%) and the UK (+17.7%), followed by Italy (+10.5%) and France (10.3%). Noteworthy was the contribution of Sweden (+103.9%) over this period.

P R E S S R E L E A S E

PRESS EMBARGO FOR ALL DATA :

8.00 AM (6.00 AM GMT), 26 June 2015

PROVISIONAL EU¹+EFTA COUNTRIES NEW REGISTRATION FIGURES BY MARKET NEW LIGHT COMMERCIAL VEHICLES up to 3.5t²

26/06/15

	May '15	May '14	% Change	Jan-May '15	Jan-May '14	% Change
AUSTRIA	2,596	2,670	-2.8%	13,056	12,913	1.1%
BELGIUM	5,365	4,851	10.6%	28,532	25,512	11.8%
BULGARIA	311	228	36.4%	1,747	1,498	16.6%
CROATIA	686	592	15.9%	2,769	2,821	-1.8%
CYPRUS	144	121	19.0%	482	430	12.1%
CZECH REPUBLIC	1,212	968	25.2%	6,690	4,916	36.1%
DENMARK	2,626	2,421	8.5%	12,895	11,053	16.7%
ESTONIA	283	280	1.1%	1,567	1,239	26.5%
FINLAND	926	881	5.1%	4,832	4,468	8.1%
FRANCE	26,703	29,179	-8.5%	150,740	152,967	-1.5%
GERMANY	17,782	19,758	-10.0%	91,060	85,821	6.1%
GREECE	417	397	5.0%	2,897	1,861	55.7%
HUNGARY	1,217	1,373	-11.4%	6,720	5,714	17.6%
IRELAND	1,698	1,261	34.7%	13,831	8,876	55.8%
ITALY ³	10,800	10,481	3.0%	51,701	48,277	7.1%
LATVIA	230	168	36.9%	979	931	5.2%
LITHUANIA	175	208	-15.9%	908	885	2.6%
LUXEMBURG	276	248	11.3%	1,496	1,449	3.2%
NETHERLANDS	4,819	4,349	10.8%	25,944	24,223	7.1%
POLAND	4,215	3,551	18.7%	20,129	17,293	16.4%
PORTUGAL	2,404	2,058	16.8%	11,485	9,854	16.6%
ROMANIA	877	934	-6.1%	3,998	3,713	7.7%
SLOVAKIA	546	420	30.0%	2,644	2,035	29.9%
SLOVENIA	575	597	-3.7%	2,904	3,285	-11.6%
SPAIN	13,145	10,577	24.3%	61,784	46,278	33.5%
SWEDEN	3,895	3,625	7.4%	18,351	17,189	6.8%
UNITED KINGDOM	27,960	24,283	15.1%	150,662	124,820	20.7%
EUROPEAN UNION¹	131,883	126,479	4.3%	690,803	620,321	11.4%
EU15 ⁴	121,412	117,039	3.7%	639,266	575,561	11.1%
EU12 ⁵	10,471	9,440	10.9%	51,537	44,760	15.1%
ICELAND	146	100	46.0%	562	373	50.7%
NORWAY	2,684	2,607	3.0%	13,177	12,053	9.3%
SWITZERLAND	2,617	2,577	1.6%	12,898	12,360	4.4%
EFTA	5,447	5,284	3.1%	26,637	24,786	7.5%
EU+EFTA	137,330	131,763	4.2%	717,440	645,107	11.2%
WESTERN EUROPE (EU15+EFTA)	126,859	122,323	3.7%	665,903	600,347	10.9%

SOURCE: NATIONAL AUTOMOBILE MANUFACTURERS' ASSOCIATIONS

¹ Data for Malta unavailable

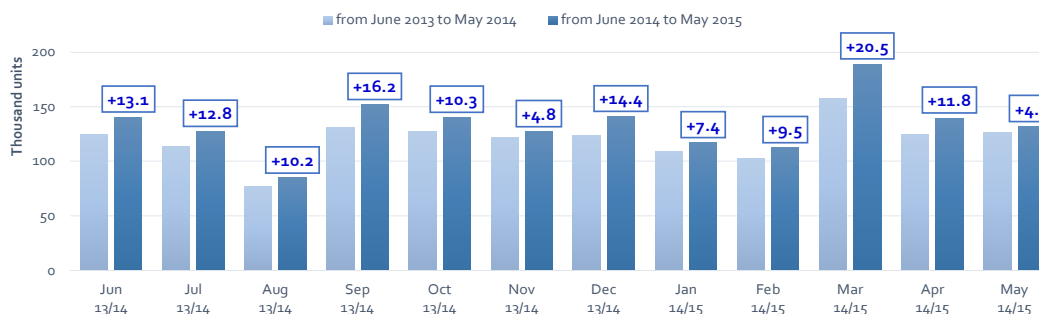
² Including Light Buses & Coaches

³ ANFIA estimates

⁴ Member States before the 2004 enlargement

⁵ Member States having joined the EU since 2004 (data for Malta unavailable)

New light commercial vehicle registrations in the EU - 12 months trend



For further information, please contact: Ms Francesca Piazza - Statistics & Communications Advisor - E-mail: fp@acea.be - Tel. (32) 2 738 73 55

This information is available on the ACEA website: <http://www.acea.be>
Next Press Release on Commercial Vehicles to be issued on Tuesday 28 July 2015

P R E S S R E L E A S E

PRESS EMBARGO FOR ALL DATA :

8.00 AM (6.00 AM GMT), 26 June 2015

PROVISIONAL

EU¹+EFTA COUNTRIES NEW REGISTRATION FIGURES BY MARKET NEW HEAVY COMMERCIAL VEHICLES of 16t and over²

26/06/15

	May '15	May '14	% Change	Jan-May '15	Jan-May '14	% Change
AUSTRIA	525	564	-6.9%	3,036	2,945	3.1%
BELGIUM	569	448	27.0%	2,954	3,027	-2.4%
BULGARIA	n.a	n.a	n.a	n.a	n.a	n.a
CROATIA	106	68	55.9%	349	350	-0.3%
CYPRUS	2	1	100.0%	2	5	-60.0%
CZECH REPUBLIC ³	696	628	10.8%	3,448	3,103	11.1%
DENMARK	335	231	45.0%	1,769	1,120	57.9%
ESTONIA	50	36	38.9%	322	364	-11.5%
FINLAND	195	190	2.6%	842	871	-3.3%
FRANCE	2,676	2,090	28.0%	14,618	13,998	4.4%
GERMANY	5,111	5,349	-4.4%	25,416	25,202	0.8%
GREECE	18	19	-5.3%	90	62	45.2%
HUNGARY	264	337	-21.7%	1,991	1,520	31.0%
IRELAND ⁴	151	111	36.0%	812	841	-3.4%
ITALY ⁵	1,013	821	23.4%	4,904	4,290	14.3%
LATVIA	116	57	103.5%	544	548	-0.7%
LITHUANIA ⁴	314	123	155.3%	1,309	938	39.6%
LUXEMBURG ⁴	69	82	-15.9%	418	413	1.2%
NETHERLANDS	974	743	31.1%	5,734	3,056	87.6%
POLAND	1,680	1,261	33.2%	7,393	6,033	22.5%
PORTUGAL	241	109	121.1%	1,140	772	47.7%
ROMANIA	544	318	71.1%	2,102	1,396	50.6%
SLOVAKIA	298	259	15.1%	1,705	1,243	37.2%
SLOVENIA ⁴	149	107	39.3%	720	566	27.2%
SPAIN	1,480	771	92.0%	6,578	4,796	37.2%
SWEDEN	426	472	-9.7%	1,949	2,021	-3.6%
UNITED KINGDOM	2,595	1,883	37.8%	12,537	7,710	62.6%
EUROPEAN UNION¹	20,597	17,078	20.6%	102,682	87,190	17.8%
EU15	16,378	13,883	18.0%	82,797	71,124	16.4%
EU12 ¹	4,219	3,195	32.1%	19,885	16,066	23.8%
ICELAND	9	5	80.0%	41	31	32.3%
NORWAY ⁴	356	382	-6.8%	1,655	1,782	-7.1%
SWITZERLAND ³	267	376	-29.0%	1,317	1,482	-11.1%
EFTA	632	763	-17.2%	3,013	3,295	-8.6%
EU+EFTA	21,229	17,841	19.0%	105,695	90,485	16.8%
WESTERN EUROPE (EU15+EFTA)	17,010	14,646	16.1%	85,810	74,419	15.3%

SOURCE: NATIONAL AUTOMOBILE MANUFACTURERS' ASSOCIATIONS

¹ Data for Malta unavailable

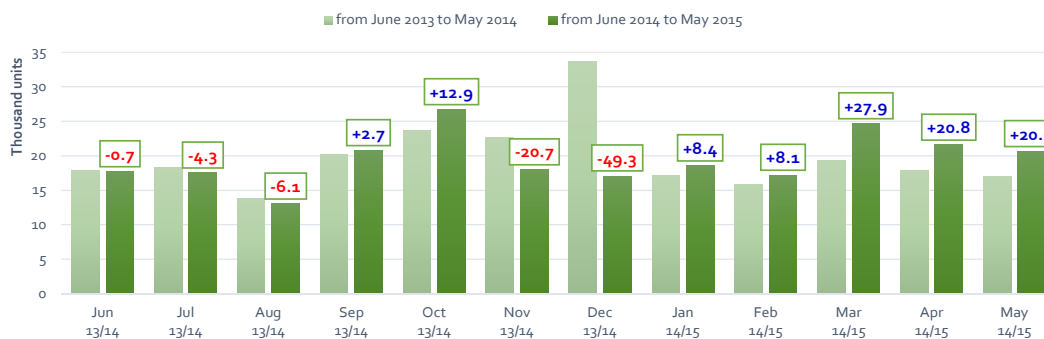
⁴ AAA estimates

² Excluding Heavy Buses & Coaches

⁵ ANFIA estimates based on vehicle registration certificates issued by the Italian Ministry of Transport

³ Heavy Commercial Vehicles of 18t and over

New heavy commercial vehicle registrations in the EU - 12 months trend



For further information, please contact: Ms Francesca Piazza - Statistics & Communications Advisor - E-mail: fp@acea.be - Tel. (32) 2 738 73 55

This information is available on the ACEA website: <http://www.acea.be>

P R E S S R E L E A S E

PRESS EMBARGO FOR ALL DATA :

8.00 AM (6.00 AM GMT), 26 June 2015

PROVISIONAL

EU¹+EFTA COUNTRIES NEW REGISTRATION FIGURES BY MARKET NEW MEDIUM & HEAVY COMMERCIAL VEHICLES over 3.5t²

26/06/15

	May '15	May '14	% Change	Jan-May '15	Jan-May '14	% Change
AUSTRIA	571	595	-4.0%	3,258	3,127	4.2%
BELGIUM	700	574	22.0%	3,637	3,703	-1.8%
BULGARIA	n.a.	n.a.	n.a.	n.a.	n.a.	n.a.
CROATIA	152	103	47.6%	471	431	9.3%
CYPRUS	4	2	100.0%	22	9	144.4%
CZECH REPUBLIC	813	747	8.8%	4,125	3,791	8.8%
DENMARK	354	253	39.9%	1,947	1,234	57.8%
ESTONIA	54	41	31.7%	346	390	-11.3%
FINLAND	245	255	-3.9%	1,084	1,125	-3.6%
FRANCE	3,166	2,514	25.9%	17,158	16,906	1.5%
GERMANY	7,219	7,743	-6.8%	35,370	36,409	-2.9%
GREECE	24	35	-31.4%	147	124	18.5%
HUNGARY	304	362	-16.0%	2,150	1,723	24.8%
IRELAND	209	151	38.4%	981	1,036	-5.3%
ITALY ³	1,334	1,168	14.2%	6,301	5,690	10.7%
LATVIA	125	67	86.6%	579	583	-0.7%
LITHUANIA ⁴	320	133	140.6%	1,332	999	33.3%
LUXEMBURG	74	90	-17.8%	438	460	-4.8%
NETHERLANDS	1,090	875	24.6%	6,342	3,529	79.7%
POLAND	1,839	1,473	24.8%	8,175	6,930	18.0%
PORTUGAL	284	171	66.1%	1,374	1,036	32.6%
ROMANIA	570	340	67.6%	2,202	1,514	45.4%
SLOVAKIA	317	290	9.3%	1,839	1,427	28.9%
SLOVENIA ⁴	163	121	34.7%	792	629	25.9%
SPAIN	1,784	941	89.6%	7,819	5,836	34.0%
SWEDEN	490	521	-6.0%	2,203	2,250	-2.1%
UNITED KINGDOM	3,555	2,616	35.9%	16,784	11,615	44.5%
EUROPEAN UNION¹	25,760	22,181	16.1%	126,876	112,506	12.8%
EU15	21,099	18,502	14.0%	104,843	94,080	11.4%
EU12 ¹	4,661	3,679	26.7%	22,033	18,426	19.6%
ICELAND	22	9	144.4%	81	45	80.0%
NORWAY	511	529	-3.4%	2,194	2,417	-9.2%
SWITZERLAND	313	469	-33.3%	1,625	1,873	-13.2%
EFTA	846	1,007	-16.0%	3,900	4,335	-10.0%
EU+EFTA	26,606	23,188	14.7%	130,776	116,841	11.9%
WESTERN EUROPE (EU15+EFTA)	21,945	19,509	12.5%	108,743	98,415	10.5%

SOURCE: NATIONAL AUTOMOBILE MANUFACTURERS' ASSOCIATIONS

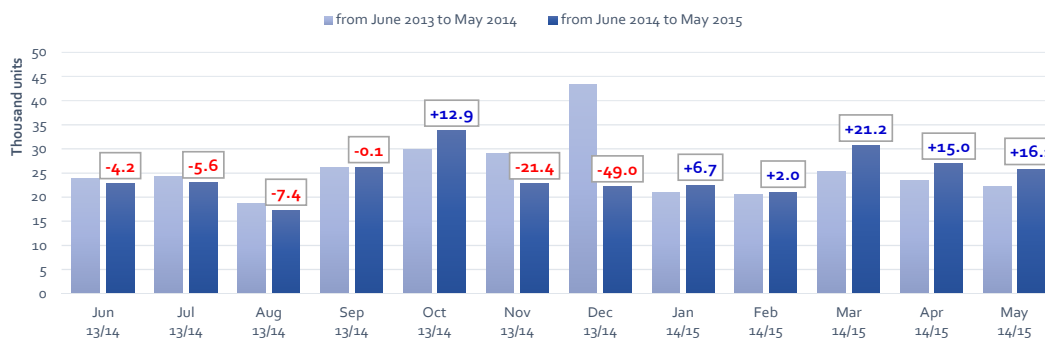
¹ Data for Malta unavailable

³ ANFIA estimates based on vehicle registration certificates issued by the Italian Ministry of Transport

² Excluding total Buses & Coaches over 3.5t

⁴ AAA estimates

New medium & heavy commercial vehicle registrations in the EU - 12 months trend



P R E S S R E L E A S E

PRESS EMBARGO FOR ALL DATA :

8.00 AM (6.00 AM GMT), 26 June 2015

PROVISIONAL

EU¹+EFTA COUNTRIES NEW REGISTRATION FIGURES BY MARKET NEW MEDIUM & HEAVY BUSES & COACHES over 3.5t

26/06/15

	May '15	May '14	% Change	Jan-May '15	Jan-May '14	% Change
AUSTRIA	65	186	-65.1%	406	479	-15.2%
BELGIUM	79	100	-21.0%	492	367	34.1%
BULGARIA	n.a.	n.a.	n.a.	n.a.	n.a.	n.a.
CROATIA	9	20	-55.0%	69	55	25.5%
CYPRUS	n.a.	n.a.	n.a.	n.a.	n.a.	n.a.
CZECH REPUBLIC	93	63	47.6%	459	401	14.5%
DENMARK	31	29	6.9%	120	109	10.1%
ESTONIA	34	19	78.9%	131	79	65.8%
FINLAND	25	54	-53.7%	152	163	-6.7%
FRANCE	334	292	14.4%	2,272	2,060	10.3%
GERMANY	427	477	-10.5%	2,257	2,196	2.8%
GREECE	24	48	-50.0%	62	94	-34.0%
HUNGARY	44	82	-46.3%	162	235	-31.1%
IRELAND	21	16	31.3%	157	111	41.4%
ITALY ²	188	287	-34.5%	1,200	1,086	10.5%
LATVIA	31	24	29.2%	136	77	76.6%
LITHUANIA ³	20	6	233.3%	78	75	4.0%
LUXEMBURG	25	13	92.3%	144	98	46.9%
NETHERLANDS	18	30	-40.0%	179	294	-39.1%
POLAND	168	125	34.4%	728	596	22.1%
PORTUGAL	24	13	84.6%	157	129	21.7%
ROMANIA	91	42	116.7%	360	291	23.7%
SLOVAKIA	37	24	54.2%	139	206	-32.5%
SLOVENIA ³	9	9	0.0%	66	65	1.5%
SPAIN	221	131	68.7%	1,160	670	73.1%
SWEDEN	152	128	18.8%	414	203	103.9%
UNITED KINGDOM	737	583	26.4%	3,603	3,060	17.7%
EUROPEAN UNION¹	2,907	2,801	3.8%	15,103	13,199	14.4%
EU15	2,371	2,387	-0.7%	12,775	11,119	14.9%
EU12¹	536	414	29.5%	2,328	2,080	11.9%
ICELAND	23	8	187.5%	53	33	60.6%
NORWAY	100	84	19.0%	296	275	7.6%
SWITZERLAND	42	53	-20.8%	225	241	-6.6%
EFTA	165	145	13.8%	574	549	4.6%
EU+EFTA	3,072	2,946	4.3%	15,677	13,748	14.0%
WESTERN EUROPE (EU15+EFTA)	2,536	2,532	0.2%	13,349	11,668	14.4%

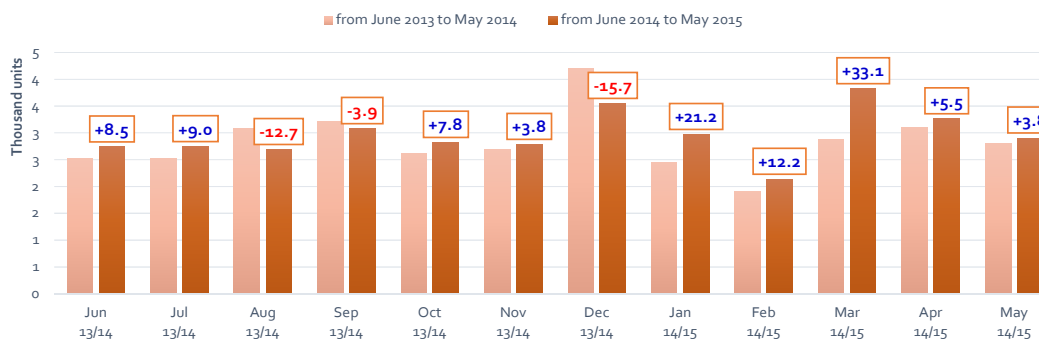
SOURCE: NATIONAL AUTOMOBILE MANUFACTURERS' ASSOCIATIONS

¹ Data for Malta unavailable

² ANFIA estimates based on vehicle registration certificates issued by the Italian Ministry of Transport

³ AAA estimates

New bus & coach registrations in the EU - 12 months trend



For further information, please contact: Ms Francesca Piazza - Statistics & Communications Advisor - E-mail: fp@acea.be - Tel. (32) 2 738 73 55

This information is available on the ACEA website: <http://www.acea.be>

PRESS RELEASE

PRESS EMBARGO FOR ALL DATA :

8.00 AM (6.00 AM GMT), 26 June 2015

PROVISIONAL EU¹+EFTA COUNTRIES NEW REGISTRATION FIGURES BY MARKET TOTAL NEW COMMERCIAL VEHICLES²

26/06/15

	May '15	May '14	% Change	Jan-May '15	Jan-May '14	% Change
AUSTRIA	3,232	3,451	-6.3%	16,720	16,519	1.2%
BELGIUM	6,144	5,525	11.2%	32,661	29,582	10.4%
BULGARIA ³	311	228	36.4%	1,747	1,498	16.6%
CROATIA	847	715	18.5%	3,309	3,307	0.1%
CYPRUS ⁴	148	123	20.3%	504	439	14.8%
CZECH REPUBLIC	2,118	1,778	19.1%	11,274	9,108	23.8%
DENMARK	3,011	2,703	11.4%	14,962	12,396	20.7%
ESTONIA	371	340	9.1%	2,044	1,708	19.7%
FINLAND	1,196	1,190	0.5%	6,068	5,756	5.4%
FRANCE	30,203	31,985	-5.6%	170,170	171,933	-1.0%
GERMANY	25,428	27,978	-9.1%	128,687	124,426	3.4%
GREECE	465	480	-3.1%	3,106	2,079	49.4%
HUNGARY	1,565	1,817	-13.9%	9,032	7,672	17.7%
IRELAND	1,928	1,428	35.0%	14,969	10,023	49.3%
ITALY ⁵	12,322	11,936	3.2%	59,202	55,053	7.5%
LATVIA	386	259	49.0%	1,694	1,591	6.5%
LITHUANIA	515	347	48.4%	2,318	1,959	18.3%
LUXEMBURG	375	351	6.8%	2,078	2,007	3.5%
NETHERLANDS	5,927	5,254	12.8%	32,465	28,046	15.8%
POLAND	6,222	5,149	20.8%	29,032	24,819	17.0%
PORTUGAL	2,712	2,242	21.0%	13,016	11,019	18.1%
ROMANIA	1,538	1,316	16.9%	6,560	5,518	18.9%
SLOVAKIA	900	734	22.6%	4,622	3,668	26.0%
SLOVENIA	747	727	2.8%	3,762	3,979	-5.5%
SPAIN	15,150	11,649	30.1%	70,763	52,784	34.1%
SWEDEN	4,537	4,274	6.2%	20,968	19,642	6.8%
UNITED KINGDOM	32,252	27,482	17.4%	171,049	139,495	22.6%
EUROPEAN UNION¹	160,550	151,461	6.0%	832,782	746,026	11.6%
EU15	144,882	137,928	5.0%	756,884	680,760	11.2%
EU12¹	15,668	13,533	15.8%	75,898	65,266	16.3%
ICELAND	191	117	63.2%	696	451	54.3%
NORWAY	3,295	3,220	2.3%	15,667	14,745	6.3%
SWITZERLAND	2,972	3,099	-4.1%	14,748	14,474	1.9%
EFTA	6,458	6,436	0.3%	31,111	29,670	4.9%
EU+EFTA	167,008	157,897	5.8%	863,893	775,696	11.4%
WESTERN EUROPE (EU15+EFTA)	151,340	144,364	4.8%	787,995	710,430	10.9%

SOURCE: NATIONAL AUTOMOBILE MANUFACTURERS' ASSOCIATIONS

¹ Data for Malta unavailable

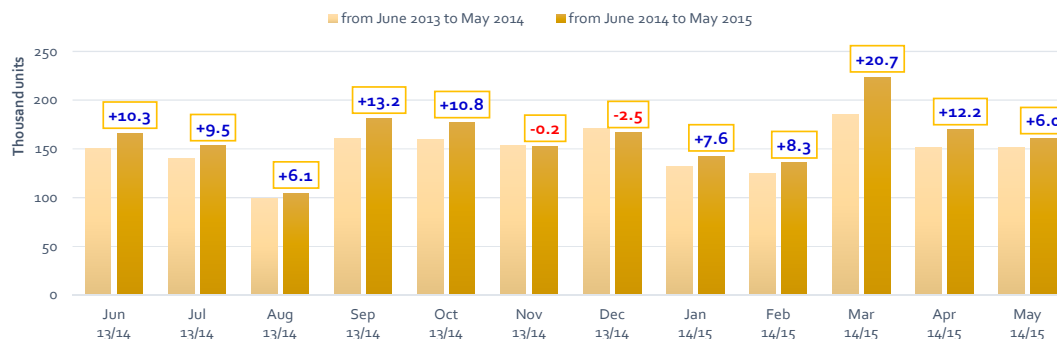
⁴ Data for Buses & Coaches unavailable

² Total Light, Medium & Heavy Commercial Vehicles and Buses & Coaches

⁵ ANFIA estimates based on vehicle registration certificates issued by the Italian Ministry of Transport

³ Data for Medium & Heavy Commercial Vehicles and Buses & Coaches unavailable

Total new commercial vehicle registrations in the EU - 12 months trend



For further information, please contact: Ms Francesca Piazza - Statistics & Communications Advisor - E-mail: fp@acea.be - Tel. (32) 2 738 73 55

This information is available on the ACEA website: <http://www.acea.be>