



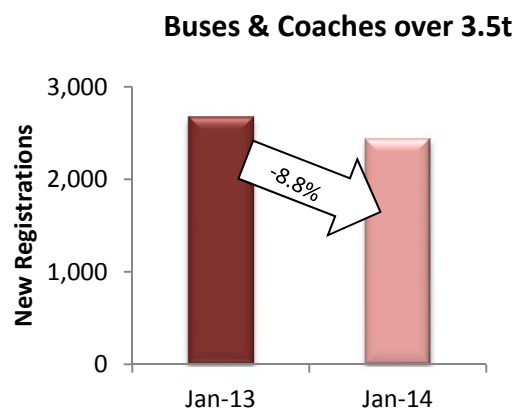
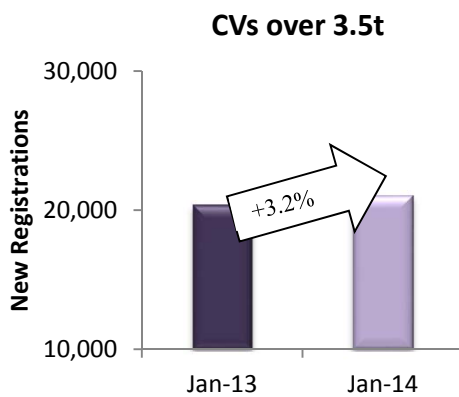
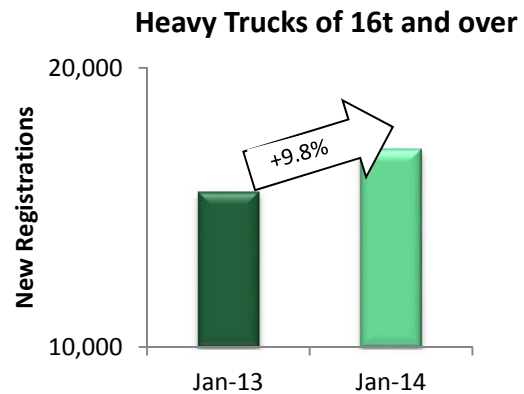
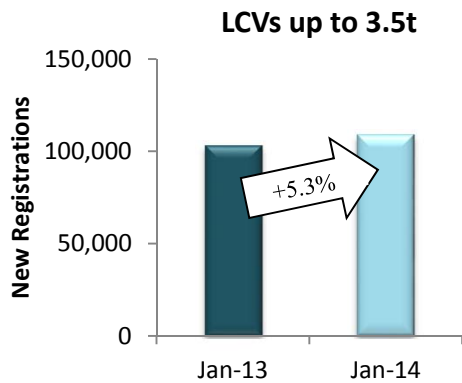
PRESS EMBARGO FOR ALL DATA:
February 26, 2014, 8.00 A.M. (7.00 A.M. GMT)

Press Release

NEW COMMERCIAL VEHICLE REGISTRATIONS

January 2014

EU Countries



Next Press Release: Thursday, March 27, 2014

COMMERCIAL VEHICLE registrations: +4.7% in January 2014

In January, demand for new commercial vehicles in the EU increased for the fifth consecutive month. Total commercial vehicle registrations grew by 4.7%, totaling 132,503 units. Growth was sustained across the van, truck and heavy truck segments, while the market for new buses and coaches contracted. Out of the most significant markets, Spain recorded the highest upturn (+44.9%). Italy also posted double-digit growth (+12.2%), while demand in the UK (+5.3%) and Germany (+3.0) also increased. France was the only major market recording a decline (-5.1%).

New Light Commercial Vehicles up to 3.5t – 'vans'

In January, the segment of vans grew 5.3% to 109,019 units. This increase was boosted by growth in Spain (+48.9%), the UK (+12.9%), Italy (+10.0%) and Germany (+5.0%). However, France saw its demand for vans decline (-7.6%).

New Heavy Commercial Vehicles over 16t (excluding buses and coaches) – 'heavy trucks'

January results showed a 9.8% increase in new heavy truck registrations, totaling 17,079 units. Germany was the largest market (3,622 units), posting an 8.9% growth. France, the second largest market in January, also saw its demand increase by 17.4%, reaching 3569 units. Out of the major markets, Spain (+55%), posted the highest upturn, followed by Italy (+31.4%) and Poland (23.4%), all recording double-digit growth. At the same time, the UK market declined by 41.8%.

New Commercial Vehicles over 3.5t (excluding buses and coaches) – 'trucks'

January results showed a 3.2% increase in new truck registrations, totaling 21,040 units. Despite a moderate decline in Germany (-1.2%), it remained the largest market in the month of January in terms of volumes, registering 5,170 trucks. France, the second largest market in the same period (4,116 units), posted double-digit growth (+12.5%). Spain (+43%), Italy (+27.3%), Belgium (+26.1%) and Poland (+21.6%) also saw their demand increase. Truck registrations in the UK market fell by 38.3%.

New buses and coaches over 3.5t

In January, demand for new buses and coaches declined by 8.8%, dropping to 2,444 units. France (491 units) was the largest market in the month of January, posting a 16.1% increase in registrations. The UK (425 units) was the second largest market despite demand falling by 4.3%. In the same period, the market in Germany contracted by 11.1%, totaling 375 units. Italy recorded an 11.5% growth, reaching 282 units. At the same time, Spain saw its market for buses and coaches decline by 34%, dropping to 136 units.

** Data for Malta unavailable*



ACEA

Association des
Constructeurs
Européens
d'Automobiles

Av. des Nerviens 85
B-1040 Bruxelles

Tel (32 2) 732 55 50
Fax (32 2) 738 73 10
(32 2) 738 73 11

Press Release

**PRESS EMBARGO FOR ALL DATA :
8.00 A.M.(7.00 A.M. GMT), February 26, 2014**

PROVISIONAL EU¹ COUNTRIES REGISTRATION FIGURES BY MARKET NEW LIGHT COMMERCIAL VEHICLES up to 3.5t²

* ACEA started reporting data for Croatia as of January 2014.

26/2/14

	January '14	January '13	% Change	Jan-Jan '14	Jan-Jan '13	% Change
AUSTRIA	2,192	2,177	0.7%	2,192	2,177	0.7%
BELGIUM	5,492	5,468	0.4%	5,492	5,468	0.4%
BULGARIA ⁴	217	164	32.3%	217	164	32.3%
CROATIA*	472	318	48.4%	472	318	48.4%
CYPRUS	68	96	-29.2%	68	96	-29.2%
CZECH REPUBLIC	924	697	32.6%	924	697	32.6%
DENMARK	2,111	1,742	21.2%	2,111	1,742	21.2%
ESTONIA	246	255	-3.5%	246	255	-3.5%
FINLAND	1,004	962	4.4%	1,004	962	4.4%
FRANCE	27,255	29,503	-7.6%	27,255	29,503	-7.6%
GERMANY	14,971	14,260	5.0%	14,971	14,260	5.0%
GREECE	413	273	51.3%	413	273	51.3%
HUNGARY	873	657	32.9%	873	657	32.9%
IRELAND	2,859	1,982	44.2%	2,859	1,982	44.2%
ITALY ³	8,950	8,134	10.0%	8,950	8,134	10.0%
LATVIA	192	135	42.2%	192	135	42.2%
LITHUANIA	154	155	-0.6%	154	155	-0.6%
LUXEMBURG	254	236	7.6%	254	236	7.6%
NETHERLANDS	6,234	6,743	-7.5%	6,234	6,743	-7.5%
POLAND	3,134	3,637	-13.8%	3,134	3,637	-13.8%
PORTUGAL	1,320	1,020	29.4%	1,320	1,020	29.4%
ROMANIA	732	726	0.8%	732	726	0.8%
SLOVAKIA	353	351	0.6%	353	351	0.6%
SLOVENIA	779	537	45.1%	779	537	45.1%
SPAIN	6,886	4,624	48.9%	6,886	4,624	48.9%
SWEDEN	2,812	2,582	8.9%	2,812	2,582	8.9%
UNITED KINGDOM	18,122	16,049	12.9%	18,122	16,049	12.9%
EUROPEAN UNION¹	109,019	103,483	5.3%	109,019	103,483	5.3%
EU 15⁵	100,875	95,755	5.3%	100,875	95,755	5.3%
EU 13⁶	8,144	7,728	5.4%	8,144	7,728	5.4%
ICELAND	63	37	70.3%	63	37	70.3%
NORWAY	1,944	2,753	-29.4%	1,944	2,753	-29.4%
SWITZERLAND	2,281	2,218	2.8%	2,281	2,218	2.8%
EFTA	4,288	5,008	-14.4%	4,288	5,008	-14.4%
EU28 + EFTA	113,307	108,491	4.4%	113,307	108,491	4.4%
EU15 + EFTA	105,163	100,763	4.4%	105,163	100,763	4.4%

(¹) EU28; data for Malta currently not available

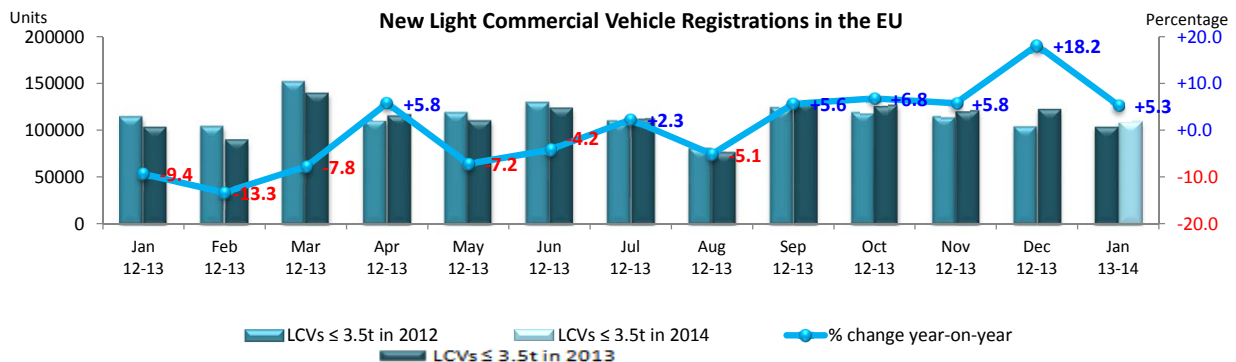
(²) ANFIA estimate

(³) Member States before the 2004 enlargement (⁶) Member States joining the EU since 2004 (data for Malta currently not available)

For further information, please contact: Ms Cara McLaughlin - Communications Director - E-mail: cm@acea.be - Tel. (32) 2 738 73 45

(⁴) including Buses & Coaches

(⁵) estimate



This information is available on the ACEA website: <http://www.acea.be>
Next Press Release on Commercial Vehicles to be issued on March 27, 2014



ACEA

Association des
Constructeurs
Européens
d'Automobiles

Av. des Nerviens 85
B-1040 Bruxelles

Tel (32 2) 732 55 50
Fax (32 2) 738 73 10
(32 2) 738 73 11

Press Release

**PRESS EMBARGO FOR ALL DATA :
8.00 A.M.(7.00 A.M. GMT), February 26, 2014**

PROVISIONAL

EU¹ + EFTA COUNTRIES REGISTRATION FIGURES BY MARKET NEW HEAVY COMMERCIAL VEHICLES of 16t and over²

* ACEA started reporting data for Croatia as of January 2014.

26/2/14

	January '14	January '13	% Change	Jan-Jan '14	Jan-Jan '13	% Change
AUSTRIA	395	412	-4.1%	395	412	-4.1%
BELGIUM	920	654	40.7%	920	654	40.7%
BULGARIA	n.a	n.a	n.a	n.a	n.a	n.a
CROATIA*	48	35	37.1%	48	35	37.1%
CYPRUS	2	1	100.0%	2	1	100.0%
CZECH REPUBLIC ³	624	443	40.9%	624	443	40.9%
DENMARK	156	237	-34.2%	156	237	-34.2%
ESTONIA	160	95	68.4%	160	95	68.4%
FINLAND	184	250	-26.4%	184	250	-26.4%
FRANCE	3,569	3,040	17.4%	3,569	3,040	17.4%
GERMANY	3,622	3,325	8.9%	3,622	3,325	8.9%
GREECE	6	16	-62.5%	6	16	-62.5%
HUNGARY	347	263	31.9%	347	263	31.9%
IRELAND	226	194	16.5%	226	194	16.5%
ITALY ⁴	1,235	940	31.4%	1,235	940	31.4%
LATVIA	160	85	88.2%	160	85	88.2%
LITHUANIA ⁵	303	173	75.1%	303	173	75.1%
LUXEMBURG ⁵	107	77	39.0%	107	77	39.0%
NETHERLANDS	257	740	-65.3%	257	740	-65.3%
POLAND	1,075	871	23.4%	1,075	871	23.4%
PORTUGAL	235	160	46.9%	235	160	46.9%
ROMANIA	313	156	100.6%	313	156	100.6%
SLOVAKIA	223	192	16.1%	223	192	16.1%
SLOVENIA ⁵	114	106	7.5%	114	106	7.5%
SPAIN	1,426	920	55.0%	1,426	920	55.0%
SWEDEN	293	312	-6.1%	293	312	-6.1%
UNITED KINGDOM	1,079	1,854	-41.8%	1,079	1,854	-41.8%
EUROPEAN UNION¹	17,079	15,551	9.8%	17,079	15,551	9.8%
EU15⁶	13,710	13,131	4.4%	13,710	13,131	4.4%
EU13⁷	3,369	2,420	39.2%	3,369	2,420	39.2%
ICELAND	5	4	25.0%	5	4	25.0%
NORWAY ⁵	306	321	-4.7%	306	321	-4.7%
SWITZERLAND ³	219	183	19.7%	219	183	19.7%
EFTA	530	508	4.3%	530	508	4.3%
EU28 + EFTA	17,609	16,059	9.7%	17,609	16,059	9.7%
EU15+EFTA	14,240	13,639	4.4%	14,240	13,639	4.4%

(¹) EU28; data for Malta and Bulgaria currently not available

(²) Excluding Buses and Coaches

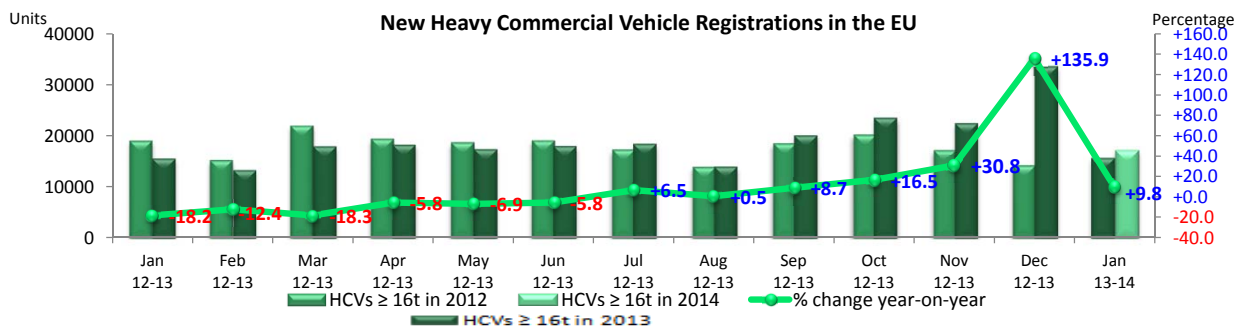
(³) CV ≥ 18t

(⁴) ANFIA estimate, based on data of the Italian Ministry of Transport

(⁵) estimates

(⁶) Member States before the 2004 enlargement (⁷) Member States joining the EU since 2004 (data for Malta and Bulgaria currently not available)

For further information, please contact: Ms Cara McLaughlin - Communications Director - E-mail: cm@acea.be - Tel. (32) 2 738 73 45



This information is available on the ACEA website: <http://www.acea.be>



ACEA

Association des
Constructeurs
Européens
d'Automobiles

Av. des Nerviens 85
B-1040 Bruxelles

Tel (32 2) 732 55 50
Fax (32 2) 738 73 10
(32 2) 738 73 11

Press Release

**PRESS EMBARGO FOR ALL DATA :
8.00 A.M.(7.00 A.M. GMT), February 26, 2014**

PROVISIONAL

EU¹ + EFTA COUNTRIES REGISTRATION FIGURES BY MARKET NEW MEDIUM & HEAVY COMMERCIAL VEHICLES over 3.5t²

* ACEA started reporting data for Croatia as of January 2014.

26/2/14

	January '14	January '13	% Change	Jan-Jan '14	Jan-Jan '13	% Change
AUSTRIA	426	446	-4.5%	426	446	-4.5%
BELGIUM	1,030	817	26.1%	1,030	817	26.1%
BULGARIA	n.a.	n.a.	n.a.	n.a.	n.a.	n.a.
CROATIA*	51	40	27.5%	51	40	27.5%
CYPRUS	4	4	0.0%	4	4	0.0%
CZECH REPUBLIC	750	625	20.0%	750	625	20.0%
DENMARK	172	266	-35.3%	172	266	-35.3%
ESTONIA	164	107	53.3%	164	107	53.3%
FINLAND	230	332	-30.7%	230	332	-30.7%
FRANCE	4,116	3,658	12.5%	4,116	3,658	12.5%
GERMANY	5,170	5,231	-1.2%	5,170	5,231	-1.2%
GREECE	20	28	-28.6%	20	28	-28.6%
HUNGARY	411	296	38.9%	411	296	38.9%
IRELAND	269	219	22.8%	269	219	22.8%
ITALY ⁴	1,514	1,189	27.3%	1,514	1,189	27.3%
LATVIA	165	91	81.3%	165	91	81.3%
LITHUANIA ³	314	195	61.0%	314	195	61.0%
LUXEMBURG	111	90	23.3%	111	90	23.3%
NETHERLANDS	304	883	-65.6%	304	883	-65.6%
POLAND	1,240	1,020	21.6%	1,240	1,020	21.6%
PORTUGAL	281	177	58.8%	281	177	58.8%
ROMANIA	327	169	93.5%	327	169	93.5%
SLOVAKIA	255	222	14.9%	255	222	14.9%
SLOVENIA ³	125	119	5.0%	125	119	5.0%
SPAIN	1,594	1,115	43.0%	1,594	1,115	43.0%
SWEDEN	328	347	-5.5%	328	347	-5.5%
UNITED KINGDOM	1,669	2,705	-38.3%	1,669	2,705	-38.3%
EUROPEAN UNION¹	21,040	20,391	3.2%	21,040	20,391	3.2%
EU 15⁵	17,234	17,503	-1.5%	17,234	17,503	-1.5%
EU 13⁶	3,806	2,888	31.8%	3,806	2,888	31.8%
ICELAND	7	5	40.0%	7	5	40.0%
NORWAY	402	430	-6.5%	402	430	-6.5%
SWITZERLAND	316	232	36.2%	316	232	36.2%
EFTA	725	667	8.7%	725	667	8.7%
EU28 + EFTA	21,765	21,058	3.4%	21,765	21,058	3.4%
EU15+EFTA	17,959	18,170	-1.2%	17,959	18,170	-1.2%

(¹) EU27; data for Malta and Bulgaria currently not available

(²) Excluding Buses and Coaches

(³) estimates

(⁴) ANFIA estimate, based on data of the Italian Ministry of Transport

(⁵) Member States before the 2004 enlargement

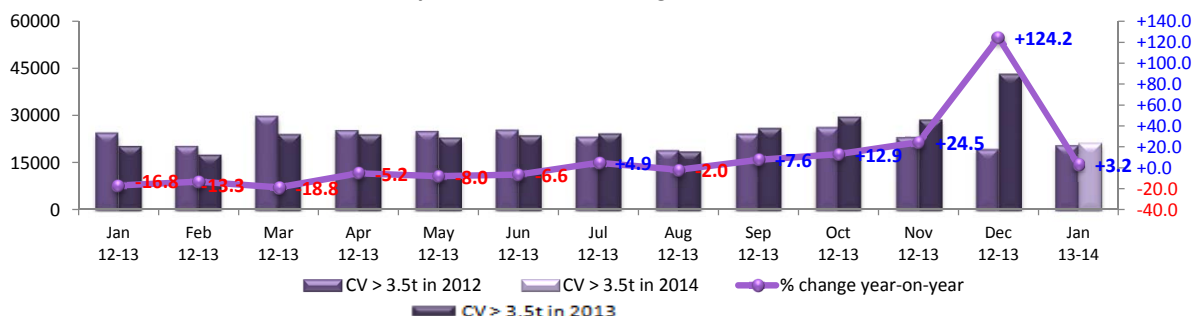
(⁶) Member States joining the EU since 2004 (data for Malta and Bulgaria currently not available)

For further information, please contact: Ms Cara McLaughlin - Communications Director - E-mail: cm@acea.be - Tel. (32) 2 738 73 45

Units

New Medium & Heavy Commercial Vehicle Registrations in the EU

Percentage



This information is available on the ACEA website: <http://www.acea.be>



ACEA

Association des
Constructeurs
Européens
d'Automobiles

Av. des Nerviens 85
B-1040 Bruxelles

Tel (32 2) 732 55 50
Fax (32 2) 738 73 10
(32 2) 738 73 11

Press Release

**PRESS EMBARGO FOR ALL DATA :
8.00 A.M.(7.00 A.M. GMT), February 26, 2014**

PROVISIONAL

EU¹ + EFTA COUNTRIES REGISTRATION FIGURES BY MARKET NEW MEDIUM & HEAVY BUSES & COACHES over 3.5t

* ACEA started reporting data for Croatia as of January 2014.

26/2/14

	January '14	January '13	% Change	Jan-Jan '14	Jan-Jan '13	% Change
AUSTRIA	48	36	33.3%	48	36	33.3%
BELGIUM	74	74	0.0%	74	74	0.0%
BULGARIA	n.a.	n.a.	n.a.	n.a.	n.a.	n.a.
CROATIA*	0	2	-100.0%	0	2	-100.0%
CYPRUS	n.a.	n.a.	n.a.	n.a.	n.a.	n.a.
CZECH REPUBLIC	115	70	64.3%	115	70	64.3%
DENMARK	14	45	-68.9%	14	45	-68.9%
ESTONIA	26	4	550.0%	26	4	550.0%
FINLAND	22	26	-15.4%	22	26	-15.4%
FRANCE	491	423	16.1%	491	423	16.1%
GERMANY	375	422	-11.1%	375	422	-11.1%
GREECE	19	8	137.5%	19	8	137.5%
HUNGARY	11	9	22.2%	11	9	22.2%
IRELAND	37	15	146.7%	37	15	146.7%
ITALY ³	282	253	11.5%	282	253	11.5%
LATVIA	21	4	425.0%	21	4	425.0%
LITHUANIA ²	32	8	300.0%	32	8	300.0%
LUXEMBURG	35	48	-27.1%	35	48	-27.1%
NETHERLANDS	23	69	-66.7%	23	69	-66.7%
POLAND	53	56	-5.4%	53	56	-5.4%
PORTUGAL	45	46	-2.2%	45	46	-2.2%
ROMANIA	46	314	-85.4%	46	314	-85.4%
SLOVAKIA	84	29	189.7%	84	29	189.7%
SLOVENIA ²	12	9	33.3%	12	9	33.3%
SPAIN	136	206	-34.0%	136	206	-34.0%
SWEDEN	18	61	-70.5%	18	61	-70.5%
UNITED KINGDOM	425	444	-4.3%	425	444	-4.3%
EUROPEAN UNION¹	2,444	2,681	-8.8%	2,444	2,681	-8.8%
EU 15⁴	2,044	2,176	-6.1%	2,044	2,176	-6.1%
EU 13⁵	400	505	-20.8%	400	505	-20.8%
ICELAND	5	5	0.0%	5	5	0.0%
NORWAY	40	47	-14.9%	40	47	-14.9%
SWITZERLAND	42	19	121.1%	42	19	121.1%
EFTA	87	71	22.5%	87	71	22.5%
EU28 + EFTA	2,531	2,752	-8.0%	2,531	2,752	-8.0%
EU15+EFTA	2,131	2,247	-5.2%	2,131	2,247	-5.2%

(¹) EU27; data for Bulgaria, Malta and Cyprus currently not available

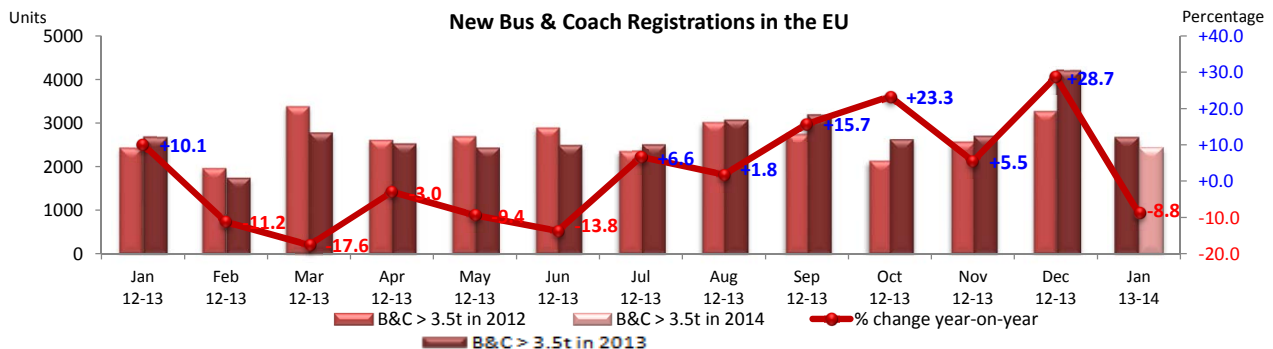
(²) estimates

(³) ANFIA estimate, based on data of the Italian Ministry of Transport

(⁴) Member States before the 2004 enlargement

(⁵) Member States joining the EU since 2004 (data for Malta, Bulgaria and Cyprus currently not available)

For further information, please contact: Ms Cara McLaughlin - Communications Director - E-mail: cm@acea.be - Tel. (32) 2 738 73 45



This information is available on the ACEA website: <http://www.acea.be>



ACEA

Association des
Constructeurs
Européens
d'Automobiles

Av. des Nerviens 85
B-1040 Bruxelles

Tel (32 2) 732 55 50
Fax (32 2) 738 73 10
(32 2) 738 73 11

Press Release

**PRESS EMBARGO FOR ALL DATA :
8.00 A.M.(7.00 A.M. GMT), February 26, 2014**

PROVISIONAL

EU¹ + EFTA COUNTRIES REGISTRATION FIGURES BY MARKET TOTAL NEW COMMERCIAL VEHICLES

* ACEA started reporting data for Croatia as of January 2014.

26/2/14

	January '14	January '13	% Change	Jan-Jan '14	Jan-Jan '13	% Change
AUSTRIA	2,666	2,659	0.3%	2,666	2,659	0.3%
BELGIUM	6,596	6,359	3.7%	6,596	6,359	3.7%
BULGARIA ⁴	217	164	32.3%	217	164	32.3%
CROATIA*	523	360	45.3%	523	360	45.3%
CYPRUS ⁵	72	100	-28.0%	72	100	-28.0%
CZECH REPUBLIC	1,789	1,392	28.5%	1,789	1,392	28.5%
DENMARK	2,297	2,053	11.9%	2,297	2,053	11.9%
ESTONIA	436	366	19.1%	436	366	19.1%
FINLAND	1,256	1,320	-4.8%	1,256	1,320	-4.8%
FRANCE	31,862	33,584	-5.1%	31,862	33,584	-5.1%
GERMANY	20,516	19,913	3.0%	20,516	19,913	3.0%
GREECE	452	309	46.3%	452	309	46.3%
HUNGARY	1,295	962	34.6%	1,295	962	34.6%
IRELAND	3,165	2,216	42.8%	3,165	2,216	42.8%
ITALY ²	10,746	9,576	12.2%	10,746	9,576	12.2%
LATVIA	378	230	64.3%	378	230	64.3%
LITHUANIA	500	358	39.7%	500	358	39.7%
LUXEMBURG	400	374	7.0%	400	374	7.0%
NETHERLANDS	6,561	7,695	-14.7%	6,561	7,695	-14.7%
POLAND	4,427	4,713	-6.1%	4,427	4,713	-6.1%
PORTUGAL	1,646	1,243	32.4%	1,646	1,243	32.4%
ROMANIA	1,105	1,209	-8.6%	1,105	1,209	-8.6%
SLOVAKIA	692	602	15.0%	692	602	15.0%
SLOVENIA	916	665	37.7%	916	665	37.7%
SPAIN	8,616	5,945	44.9%	8,616	5,945	44.9%
SWEDEN	3,158	2,990	5.6%	3,158	2,990	5.6%
UNITED KINGDOM	20,216	19,198	5.3%	20,216	19,198	5.3%
EUROPEAN UNION¹	132,503	126,555	4.7%	132,503	126,555	4.7%
EU 15⁵	120,153	115,434	4.1%	120,153	115,434	4.1%
EU 13⁶	12,350	11,121	11.1%	12,350	11,121	11.1%
ICELAND	75	47	59.6%	75	47	59.6%
NORWAY	2,386	3,230	-26.1%	2,386	3,230	-26.1%
SWITZERLAND	2,639	2,469	6.9%	2,639	2,469	6.9%
EFTA	5,100	5,746	-11.2%	5,100	5,746	-11.2%
EU28 + EFTA	137,603	132,301	4.0%	137,603	132,301	4.0%
EU15+EFTA	125,253	121,180	3.4%	125,253	121,180	3.4%

(¹) EU27; data for Malta currently not available

(²) estimates

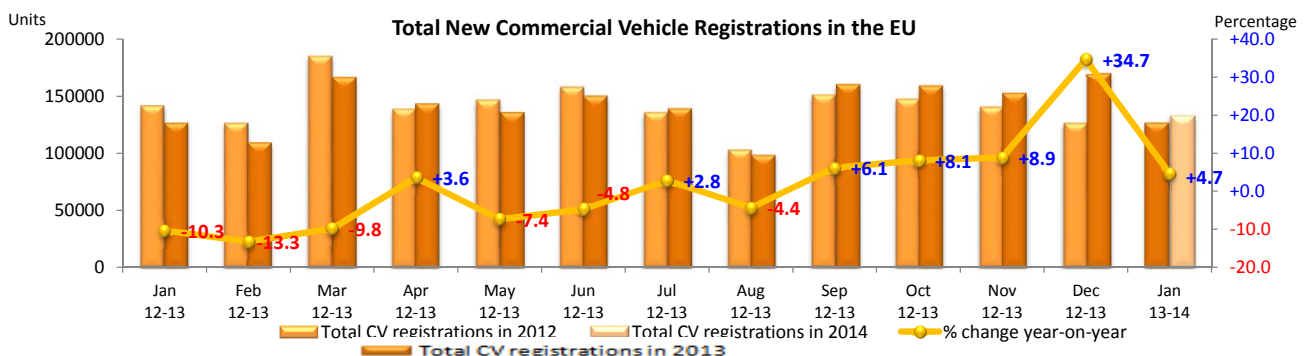
(³) data for B&C n.a.

(⁴) ANFIA estimate, based on data of the Italian Ministry of Transport

(⁵) data for MCV+HCV and MBC+HBC n.a.

(⁶) Member States before the 2004 enlargement (⁷) Member States joining the EU since 2004 (data for Malta currently not available)

For further information, please contact: Ms Cara McLaughlin - Communications Director - E-mail: cm@acea.be - Tel. (32) 2 738 73 45



This information is available on the ACEA website: <http://www.acea.be>