



**PRESS EMBARGO FOR ALL DATA:**  
**September 29, 2011, 8.00 A.M. (6.00 A.M. GMT)**

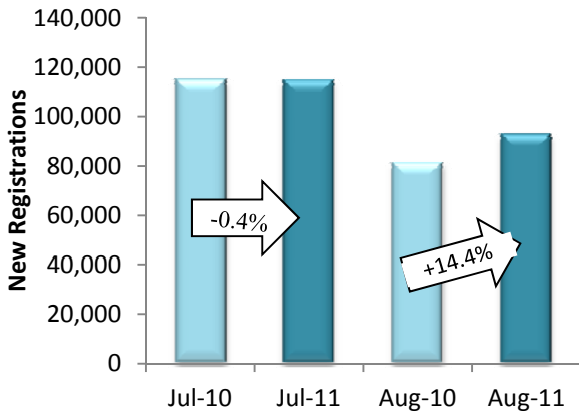
# Press Release

## NEW COMMERCIAL VEHICLE REGISTRATIONS

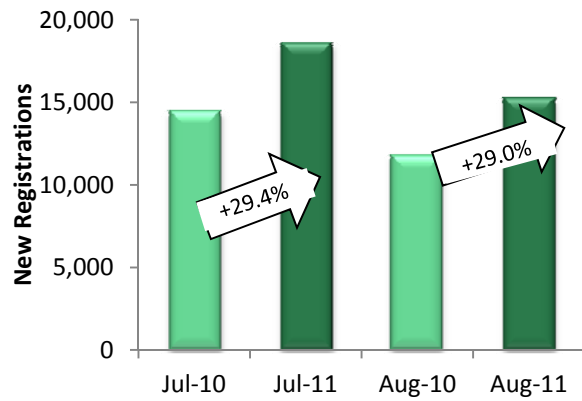
### July & August 2011

#### EU Countries

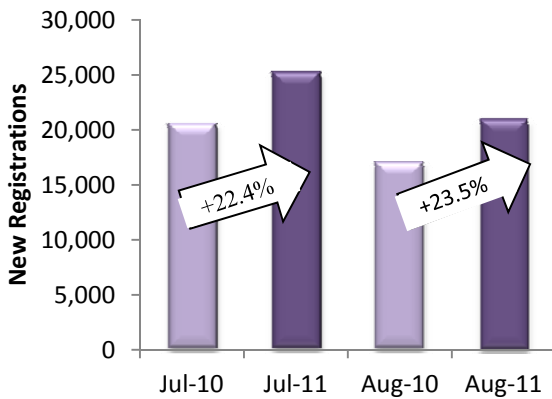
**LCVs up to 3.5t**



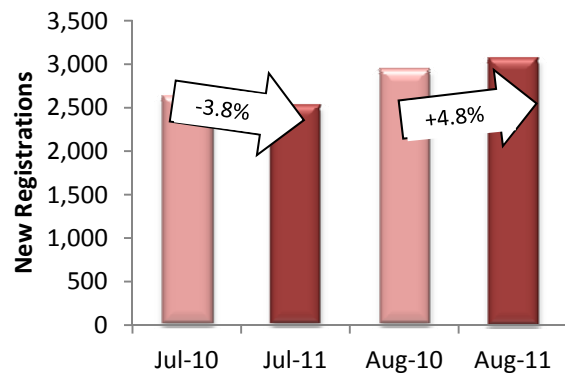
**Heavy Trucks over 16t**



**CVs over 3.5t**



**Buses & Coaches over 3.5t**



**Next Press Release: Thursday, October 27, 2011**

## COMMERCIAL VEHICLES: registrations increase over summer

New registrations of commercial vehicles in the EU\* were up 3.0% **in July\*\*** and 15.7% **in August**, leading to an 8.3% increase\*\* over the two summer months compared to the same period last year. **From January to August**, a total of 1,261,244 new commercial vehicles were registered across the region\*\*, or 12.1% more than in the first eight months of 2010. Most major markets posted growth, ranging from 6.4% in France to 21.1% in the UK and 23.3% in Germany. Spain was the only one to contract (-6.3%).

### **New Light Commercial Vehicles up to 3.5t – "vans"**

**In July**, new registrations of vans amounted to 114,947 units, or 0.4% less than in the same month last year\*\*. Of the major markets, Germany was the only one to expand (+20.9%). France (-12.0%), Spain (-3.3%) and the UK (-0.8%) performed less well than a year ago. **In August**, growth prevailed in all significant markets, ranging from 5.4% in France to 12.6% in Spain, 22.8% in the UK and 25.3% in Germany. Overall, the EU recorded 14.4% more vans than in August 2010\*\*. **Eight months into the year**, a total of 1,034,168 new vans was registered in the region\*\*, or 8.3% more than in the same period last year\*\*. While the Spanish market shrank (-10.4%), the French (+3.0%), the German (+20.6%) and the British (+20.9%) all grew.

### **New Heavy Commercial Vehicles over 16t (excluding Buses & Coaches) – "heavy trucks"**

Heavy trucks posted the strongest growth across segments **in July** (+29.4%), accounting for a total of 18,630 new vehicles\*\* in the EU\*. Spain (+10.0%), Germany (+14.1%), France (+39.9) and the UK (+46.3%) all experienced a double-digit growth. **In August**, the upturn was still strong in Germany (+18.6%), the UK (+32.4%) and France (41.7%). The Spanish market proved to be stable (-0.6%). **From January to August**, new truck registrations rose by 49.4%\*\* in the EU\*, as the UK (+57.8%), France (+57.5%), Germany (+35.3%) and Spain (+28.9%) all saw their markets expand.

### **New Commercial Vehicles over 3.5t (excluding Buses & Coaches) – "trucks"**

Demand for trucks **in July** was up 22.4%\*\* across the EU\*. Growth rates in the major markets ranged from 5.8% in Spain to 13.0% in Germany, 35.2% in France and 38.4% in the UK. **In August**, new truck registrations increased by 23.5%, reflecting the upturn in Germany (+15.6%), the UK (+29.1%) and France (+38.9%). The Spanish market remained stable (-0.5%). **From January to August**, 205,082 new trucks were registered\*\* in the EU\*, or 38.6% more than in the same period last year. With the exception of Greece (-60.3%), all markets expanded. Demand for trucks rose by 27.3% in Spain, 31.3% in Germany, 35.9% in the UK and 48.8% in France.

### **New Buses & Coaches over 3.5t**

After a 3.8% drop **in July\*\***, new bus and coach registrations increased by 4.8% in **August\*\***. France remained the largest market throughout both months and saw its market grow by 7.4% in July and 23.4% in August. **Eight months into the year**, the segment of buses and coaches was the only one to decline (-1.5%), totaling 21,994 units. Looking at the major markets, Germany (+1.2%), France (+4.5%) and Spain (+38.7%) performed better than in the same period last year. Results in the UK were negative (-26.8%).

\* Data for Cyprus and Malta are unavailable

\*\* Due to the unavailability of data from Italy since January 2011, figures reported for that country are an extrapolation made by data provider AAA. They are not actual market figures, hence the possibility of an error margin with regard to the EU totals. Italy usually accounts for 10 to 15% of the EU Commercial Vehicle market.



ACEA

Association des  
Constructeurs  
Européens  
d'Automobiles

Av. des Nerviens 85  
B-1040 Bruxelles

Tel (32 2) 732 55 50  
Fax (32 2) 738 73 10  
(32 2) 738 73 11

# Press Release

**PRESS EMBARGO FOR ALL DATA :  
8.00 A.M.(6.00 A.M. GMT), September 29, 2011**

## PROVISIONAL EU' COUNTRIES REGISTRATION FIGURES BY MARKET NEW LIGHT COMMERCIAL VEHICLES up to 3.5t<sup>2</sup>

29/9/11

	Aug '11	Aug '10	% Change	Jan-Aug '11	Jan-Aug '10	% Change
AUSTRIA	2,423	2,473	-2.0%	21,210	18,577	14.2%
BELGIUM	4,202	3,580	17.4%	44,008	37,618	17.0%
BULGARIA	165	185	-10.8%	1,450	1,694	-14.4%
CZECH REPUBLIC	1,196	848	41.0%	8,032	7,457	7.7%
DENMARK	2,167	1,171	85.1%	14,708	9,617	52.9%
ESTONIA	214	81	164.2%	1,229	628	95.7%
FINLAND	1,097	873	25.7%	8,990	6,817	31.9%
FRANCE	22,849	21,674	5.4%	275,364	267,468	3.0%
GERMANY	17,608	14,057	25.3%	147,034	121,901	20.6%
GREECE	451	673	-33.0%	4,691	8,322	-43.6%
HUNGARY	1,003	774	29.6%	6,556	5,426	20.8%
IRELAND	709	873	-18.8%	9,590	8,776	9.3%
ITALY <sup>3</sup>	6,490	6,237	4.1%	121,495	122,546	-0.9%
LATVIA	114	60	90.0%	744	292	154.8%
LITHUANIA	192	54	255.6%	1,109	412	169.2%
LUXEMBURG	254	218	16.5%	2,316	2,196	5.5%
NETHERLANDS	4,099	3,584	14.4%	41,819	35,298	18.5%
POLAND	3,168	2,679	18.3%	26,059	23,152	12.6%
PORTUGAL	1,867	2,695	-30.7%	21,606	28,222	-23.4%
ROMANIA	919	572	60.7%	6,084	4,013	51.6%
SLOVAKIA	537	418	28.5%	3,768	4,804	-21.6%
SLOVENIA	446	358	24.6%	4,335	3,290	31.8%
SPAIN	6,103	5,421	12.6%	71,684	79,990	-10.4%
SWEDEN	4,040	3,011	34.2%	29,247	23,060	26.8%
UNITED KINGDOM	10,640	8,666	22.8%	161,040	133,245	20.9%
<b>EUROPEAN UNION<sup>1</sup></b>	<b>92,953</b>	<b>81,235</b>	<b>14.4%</b>	<b>1,034,168</b>	<b>954,821</b>	<b>8.3%</b>
<b>EU 15</b>	<b>84,999</b>	<b>75,206</b>	<b>13.0%</b>	<b>974,802</b>	<b>903,653</b>	<b>7.9%</b>
<b>EU 10</b>	<b>7,954</b>	<b>6,029</b>	<b>31.9%</b>	<b>59,366</b>	<b>51,168</b>	<b>16.0%</b>
ICELAND	29	22	31.8%	184	157	17.2%
NORWAY	2,893	2,537	14.0%	22,141	18,870	17.3%
SWITZERLAND	2,085	1,952	6.8%	18,879	16,260	16.1%
EFTA	5,007	4,511	11.0%	41,204	35,287	16.8%
<b>EU27 + EFTA</b>	<b>97,960</b>	<b>85,746</b>	<b>14.2%</b>	<b>1,075,372</b>	<b>990,108</b>	<b>8.6%</b>
<b>EU15 + EFTA</b>	<b>90,006</b>	<b>79,717</b>	<b>12.9%</b>	<b>1,016,006</b>	<b>938,940</b>	<b>8.2%</b>

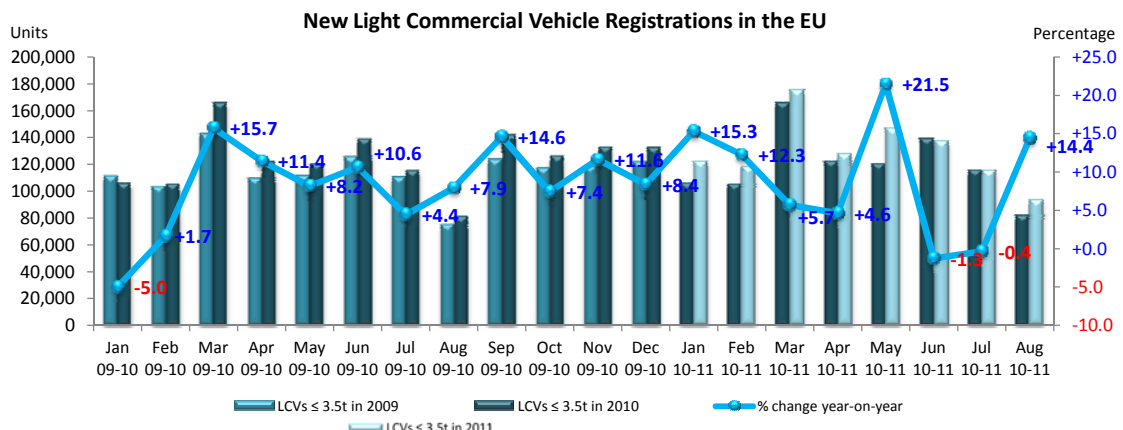
(<sup>1</sup>) EU27 including Bulgaria and Romania; data for Malta and Cyprus currently not available.

(<sup>2</sup>) including Buses & Coaches

(<sup>3</sup>) Due to the unavailability of data from Italy since January 2011, figures reported for that country are an extrapolation made by data provider AAA.

They are not actual market figures, hence the possibility of an error margin with regard to the EU totals.

For further information, please call: Ms. Quynh-Nhu Huynh - Manager Economics & Communications - Tel. + 32 2 738 73 55



This information is available on the ACEA website:

<http://www.acea.be>

**Next Press Release on Commercial Vehicles to be issued on October 27, 2011**



ACEA

Association des  
Constructeurs  
Européens  
d'Automobiles

Av. des Nerviens 85  
B-1040 Bruxelles

Tel (32 2) 732 55 50  
Fax (32 2) 738 73 10  
(32 2) 738 73 11

# Press Release

**PRESS EMBARGO FOR ALL DATA :  
8.00 A.M.(6.00 A.M. GMT), September 29, 2011**

## PROVISIONAL

### EU<sup>1</sup> + EFTA COUNTRIES REGISTRATION FIGURES BY MARKET NEW HEAVY COMMERCIAL VEHICLES of 16t and over<sup>2</sup>

29/9/11

	Aug '11	Aug '10	% Change	Jan-Aug '11	Jan-Aug '10	% Change
AUSTRIA	479	308	55.5%	4,626	2,977	55.4%
BELGIUM	510	384	32.8%	5,659	3,668	54.3%
BULGARIA	110	23	378.3%	752	231	225.5%
CZECH REPUBLIC <sup>3</sup>	397	293	35.5%	3,826	2,132	79.5%
DENMARK	256	225	13.8%	2,177	1,242	75.3%
ESTONIA	45	23	95.7%	422	152	177.6%
FINLAND	145	117	23.9%	1,527	1,120	36.3%
FRANCE	1,930	1,362	41.7%	26,303	16,699	57.5%
GERMANY	4,520	3,812	18.6%	39,912	29,489	35.3%
GREECE	7	42	-83.3%	197	435	-54.7%
HUNGARY	336	123	173.2%	2,344	1,022	129.4%
IRELAND	59	30	96.7%	601	475	26.5%
ITALY <sup>4</sup>	969	985	-1.6%	8,986	7,891	13.9%
LATVIA	84	37	127.0%	797	190	319.5%
LITHUANIA <sup>5</sup>	196	97	102.1%	1,874	600	212.3%
LUXEMBURG <sup>5</sup>	83	57	45.6%	777	453	71.5%
NETHERLANDS	741	478	55.0%	7,660	5,386	42.2%
POLAND	889	611	45.5%	9,215	4,551	102.5%
PORTUGAL	137	135	1.5%	1,557	1,364	14.1%
ROMANIA	276	152	81.6%	2,140	1,033	107.2%
SLOVAKIA	180	131	37.4%	2,094	1,001	109.2%
SLOVENIA <sup>5</sup>	78	62	25.8%	854	367	132.7%
SPAIN	887	892	-0.6%	9,512	7,377	28.9%
SWEDEN	347	238	45.8%	3,280	2,505	30.9%
UNITED KINGDOM	1,553	1,173	32.4%	16,537	10,483	57.8%
<b>EUROPEAN UNION<sup>1</sup></b>	<b>15,214</b>	<b>11,790</b>	<b>29.0%</b>	<b>153,629</b>	<b>102,843</b>	<b>49.4%</b>
<b>EUROPEAN UNION (EU15)</b>	<b>12,623</b>	<b>10,238</b>	<b>23.3%</b>	<b>129,311</b>	<b>91,564</b>	<b>41.2%</b>
<b>EU (New Members)</b>	<b>2,591</b>	<b>1,552</b>	<b>66.9%</b>	<b>24,318</b>	<b>11,279</b>	<b>115.6%</b>
ICELAND	4	0	#DIV/0!	20	14	42.9%
NORWAY <sup>5</sup>	223	169	32.0%	2,088	1,559	33.9%
SWITZERLAND <sup>3</sup>	297	186	59.7%	2,343	1,781	31.6%
<b>EFTA</b>	<b>524</b>	<b>355</b>	<b>47.6%</b>	<b>4,451</b>	<b>3,354</b>	<b>32.7%</b>
<b>TOTAL EUROPE (EU+EFTA)</b>	<b>15,738</b>	<b>12,145</b>	<b>29.6%</b>	<b>158,080</b>	<b>106,197</b>	<b>48.9%</b>
<b>EU15+EFTA</b>	<b>13,147</b>	<b>10,593</b>	<b>24.1%</b>	<b>133,762</b>	<b>94,918</b>	<b>40.9%</b>

(<sup>1</sup>) EU27 including Bulgaria and Romania; data for Malta and Cyprus currently not available.

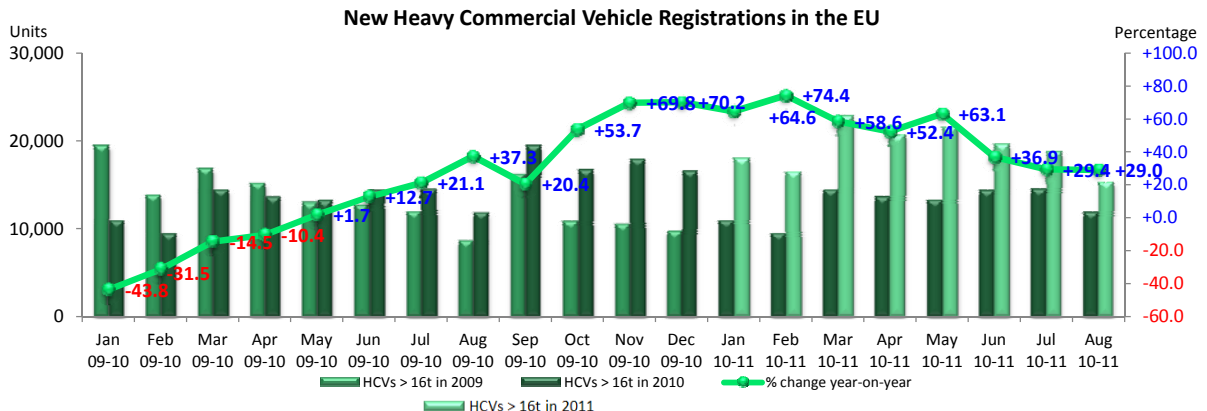
(<sup>2</sup>) Excluding Buses and Coaches

(<sup>3</sup>) CV ≥ 18t

(<sup>4</sup>) Due to the unavailability of data from Italy since January 2011, figures reported for that country are an extrapolation made by data provider AAA. They are not actual market figures, hence the possibility of an error margin with regard to the EU totals.

(<sup>5</sup>) estimates

For further information, please call: Ms. Quynh-Nhu Huynh - Manager Economics & Communications - Tel. + 32 2 738 73 55



This information is available on the ACEA website:

<http://www.acea.be>



ACEA

Association des  
Constructeurs  
Européens  
d'Automobiles

Av. des Nerviens 85  
B-1040 Bruxelles

Tel (32 2) 732 55 50  
Fax (32 2) 738 73 10  
(32 2) 738 73 11

# Press Release

**PRESS EMBARGO FOR ALL DATA :  
8.00 A.M.(6.00 A.M. GMT), September 29, 2011**

## PROVISIONAL

### EU<sup>1</sup> + EFTA COUNTRIES REGISTRATION FIGURES BY MARKET NEW MEDIUM & HEAVY COMMERCIAL VEHICLES over 3.5t<sup>2</sup>

29/9/11

	Aug '11	Aug '10	% Change	Jan-Aug '11	Jan-Aug '10	% Change
AUSTRIA	546	366	49.2%	5,094	3,365	51.4%
BELGIUM	659	528	24.8%	7,062	5,147	37.2%
BULGARIA	125	37	237.8%	836	434	92.6%
CZECH REPUBLIC	517	382	35.3%	4,893	3,025	61.8%
DENMARK	287	256	12.1%	2,437	1,594	52.9%
ESTONIA	48	34	41.2%	470	190	147.4%
FINLAND	239	202	18.3%	2,212	1,728	28.0%
FRANCE	2,436	1,754	38.9%	32,812	22,052	48.8%
GERMANY	7,413	6,413	15.6%	63,753	48,543	31.3%
GREECE	29	62	-53.2%	383	965	-60.3%
HUNGARY	361	144	150.7%	2,565	1,207	112.5%
IRELAND	99	54	83.3%	844	795	6.2%
ITALY <sup>4</sup>	1,403	1,488	-5.7%	13,170	12,145	8.4%
LATVIA	88	53	66.0%	843	222	279.7%
LITHUANIA <sup>3</sup>	210	106	98.1%	1,952	642	204.0%
LUXEMBURG	93	65	43.1%	870	507	71.6%
NETHERLANDS	864	557	55.1%	8,795	6,438	36.6%
POLAND	1,056	795	32.8%	10,788	5,728	88.3%
PORTUGAL	167	201	-16.9%	2,005	1,892	6.0%
ROMANIA	312	177	76.3%	2,406	1,306	84.2%
SLOVAKIA	219	167	31.1%	2,459	1,327	85.3%
SLOVENIA <sup>3</sup>	86	70	22.9%	963	492	95.7%
SPAIN	954	959	-0.5%	10,113	7,946	27.3%
SWEDEN	392	271	44.6%	3,739	2,922	28.0%
UNITED KINGDOM	2,367	1,833	29.1%	23,618	17,378	35.9%
<b>EUROPEAN UNION<sup>1</sup></b>	<b>20,970</b>	<b>16,974</b>	<b>23.5%</b>	<b>205,082</b>	<b>147,990</b>	<b>38.6%</b>
<b>EUROPEAN UNION (EU15)</b>	<b>17,948</b>	<b>15,009</b>	<b>19.6%</b>	<b>176,907</b>	<b>133,417</b>	<b>32.6%</b>
<b>EU (New Members)</b>	<b>3,022</b>	<b>1,965</b>	<b>53.8%</b>	<b>28,175</b>	<b>14,573</b>	<b>93.3%</b>
ICELAND	4	0	#DIV/0!	30	17	76.5%
NORWAY	350	262	33.6%	3,504	2,743	27.7%
SWITZERLAND	385	252	52.8%	3,042	2,403	26.6%
<b>EFTA</b>	<b>739</b>	<b>514</b>	<b>43.8%</b>	<b>6,576</b>	<b>5,163</b>	<b>27.4%</b>
<b>TOTAL EUROPE (EU+EFTA)</b>	<b>21,709</b>	<b>17,488</b>	<b>24.1%</b>	<b>211,658</b>	<b>153,153</b>	<b>38.2%</b>
<b>EU15+EFTA</b>	<b>18,687</b>	<b>15,523</b>	<b>20.4%</b>	<b>183,483</b>	<b>138,580</b>	<b>32.4%</b>

(<sup>1</sup>) EU27 including Bulgaria and Romania; data for Malta and Cyprus currently not available.

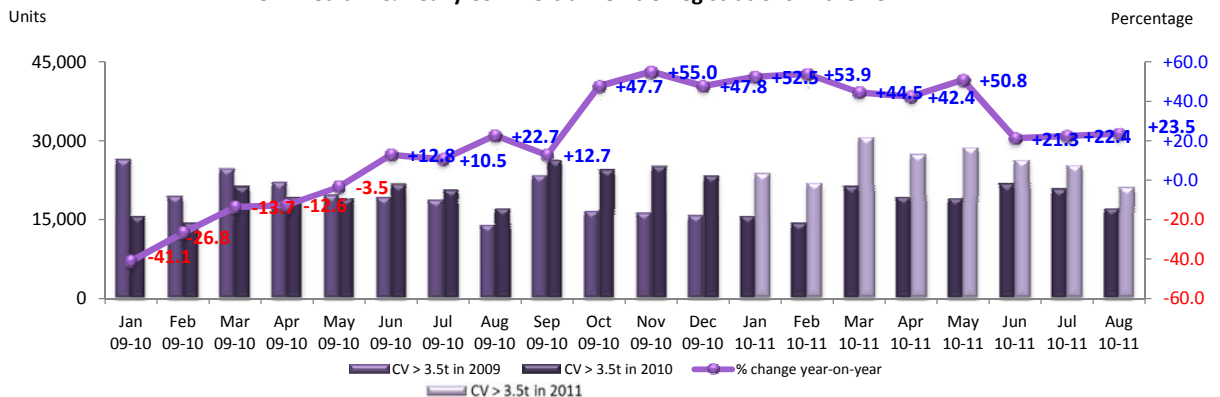
(<sup>2</sup>) Excluding Buses and Coaches

(<sup>3</sup>) estimates

(<sup>4</sup>) Due to the unavailability of data from Italy since January 2011, figures reported for that country are an extrapolation made by data provider AAA. They are not actual market figures, hence the possibility of an error margin with regard to the EU totals.

For further information, please call: Ms. Quynh-Nhu Huynh - Manager Economics & Communications - Tel. + 32 2 738 73 55

### New Medium & Heavy Commercial Vehicle Registrations in the EU



This information is available on the ACEA website:

<http://www.acea.be>



ACEA

Association des  
Constructeurs  
Européens  
d'Automobiles

Av. des Nerviens 85  
B-1040 Bruxelles

Tel (32 2) 732 55 50  
Fax (32 2) 738 73 10  
(32 2) 738 73 11

# Press Release

**PRESS EMBARGO FOR ALL DATA :  
8.00 A.M.(6.00 A.M. GMT), September 29, 2011**

## PROVISIONAL

### EU<sup>1</sup> + EFTA COUNTRIES REGISTRATION FIGURES BY MARKET NEW MEDIUM & HEAVY BUSES & COACHES over 3.5t

29/9/11

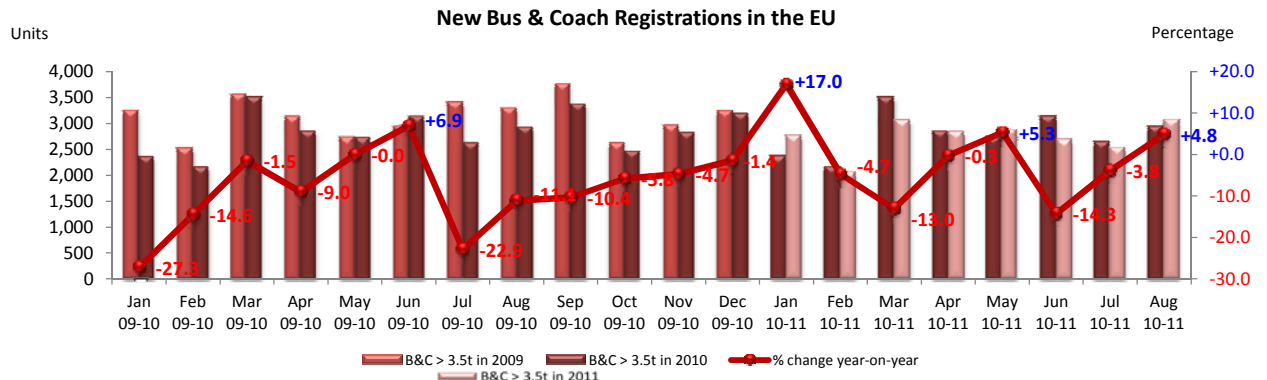
	Aug '11	Aug '10	% Change	Jan-Aug '11	Jan-Aug '10	% Change
AUSTRIA	29	25	16.0%	379	414	-8.5%
BELGIUM	73	137	-46.7%	560	800	-30.0%
BULGARIA	0	2	-100.0%	15	48	-68.8%
CZECH REPUBLIC	44	40	10.0%	436	379	15.0%
DENMARK	50	92	-45.7%	248	465	-46.7%
ESTONIA	3	5	-40.0%	32	44	-27.3%
FINLAND	63	74	-14.9%	268	347	-22.8%
FRANCE	1,059	858	23.4%	4,298	4,112	4.5%
GERMANY	362	422	-14.2%	2,974	2,940	1.2%
GREECE	1	83	-98.8%	63	205	-69.3%
HUNGARY	11	18	-38.9%	140	152	-7.9%
IRELAND	0	1	-100.0%	57	44	29.5%
ITALY <sup>3</sup>	395	268	47.4%	3,820	2,813	35.8%
LATVIA	11	1	1000.0%	147	11	1236.4%
LITHUANIA <sup>2</sup>	44	38	15.8%	75	64	17.2%
LUXEMBURG	13	5	160.0%	153	145	5.5%
NETHERLANDS	12	113	-89.4%	292	403	-27.5%
POLAND	98	83	18.1%	864	702	23.1%
PORTUGAL	17	34	-50.0%	258	346	-25.4%
ROMANIA	30	12	150.0%	106	239	-55.6%
SLOVAKIA	7	28	-75.0%	132	303	-56.4%
SLOVENIA <sup>2</sup>	13	17	-23.5%	79	114	-30.7%
SPAIN	147	57	157.9%	1,919	1,384	38.7%
SWEDEN	187	189	-1.1%	1,283	1,219	5.3%
UNITED KINGDOM	405	330	22.7%	3,396	4,642	-26.8%
<b>EUROPEAN UNION<sup>1</sup></b>	<b>3,074</b>	<b>2,932</b>	<b>4.8%</b>	<b>21,994</b>	<b>22,335</b>	<b>-1.5%</b>
<b>EUROPEAN UNION (EU15)</b>	<b>2,813</b>	<b>2,688</b>	<b>4.7%</b>	<b>19,968</b>	<b>20,279</b>	<b>-1.5%</b>
<b>EU (New Members)</b>	<b>261</b>	<b>244</b>	<b>7.0%</b>	<b>2,026</b>	<b>2,056</b>	<b>-1.5%</b>
ICELAND	0	11	-100.0%	23	24	-4.2%
NORWAY	233	111	109.9%	777	868	-10.5%
SWITZERLAND	56	42	33.3%	324	338	-4.1%
<b>EFTA</b>	<b>289</b>	<b>164</b>	<b>76.2%</b>	<b>1,124</b>	<b>1,230</b>	<b>-8.6%</b>
<b>TOTAL EUROPE (EU+EFTA)</b>	<b>3,363</b>	<b>3,096</b>	<b>8.6%</b>	<b>23,118</b>	<b>23,565</b>	<b>-1.9%</b>
<b>EU15+EFTA</b>	<b>3,102</b>	<b>2,852</b>	<b>8.8%</b>	<b>21,092</b>	<b>21,509</b>	<b>-1.9%</b>

(<sup>1</sup>) EU27 including Bulgaria and Romania; data for Malta and Cyprus currently not available.

(<sup>2</sup>) estimates

(<sup>3</sup>) Due to the unavailability of data from Italy since January 2011, figures reported for that country are an extrapolation made by data provider AAA. They are not actual market figures, hence the possibility of an error margin with regard to the EU totals.

For further information, please call: Ms. Quynh-Nhu Huynh - Manager Economics & Communications - Tel. + 32 2 738 73 55



This information is available on the ACEA website:

<http://www.acea.be>



ACEA

Association des  
Constructeurs  
Européens  
d'Automobiles

Av. des Nerviens 85  
B-1040 Bruxelles

Tel (32 2) 732 55 50  
Fax (32 2) 738 73 10  
(32 2) 738 73 11

# Press Release

**PRESS EMBARGO FOR ALL DATA :  
8.00 A.M.(6.00 A.M. GMT), September 29, 2011**

## PROVISIONAL

### EU<sup>1</sup> + EFTA COUNTRIES REGISTRATION FIGURES BY MARKET TOTAL NEW COMMERCIAL VEHICLES

29/9/11

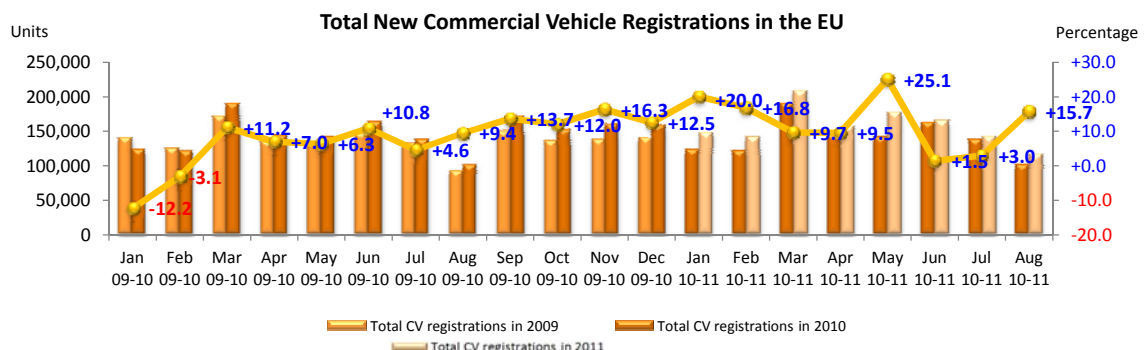
	Aug '11	Aug '10	% Change	Jan-Aug '11	Jan-Aug '10	% Change
AUSTRIA	2,998	2,864	4.7%	26,683	22,356	19.4%
BELGIUM	4,934	4,245	16.2%	51,630	43,565	18.5%
BULGARIA	290	224	29.5%	2,301	2,176	5.7%
CZECH REPUBLIC	1,757	1,270	38.3%	13,361	10,861	23.0%
DENMARK	2,504	1,519	64.8%	17,393	11,676	49.0%
ESTONIA	265	120	120.8%	1,731	862	100.8%
FINLAND	1,399	1,149	21.8%	11,470	8,892	29.0%
FRANCE	26,344	24,286	8.5%	312,474	293,632	6.4%
GERMANY	25,383	20,892	21.5%	213,761	173,384	23.3%
GREECE	481	818	-41.2%	5,137	9,492	-45.9%
HUNGARY	1,375	936	46.9%	9,261	6,785	36.5%
IRELAND	808	928	-12.9%	10,491	9,615	9.1%
ITALY <sup>2</sup>	8,288	7,993	3.7%	138,485	137,504	0.7%
LATVIA	213	114	86.8%	1,734	525	230.3%
LITHUANIA	446	198	125.3%	3,136	1,118	180.5%
LUXEMBURG	360	288	25.0%	3,339	2,848	17.2%
NETHERLANDS	4,975	4,254	16.9%	50,906	42,139	20.8%
POLAND	4,322	3,557	21.5%	37,711	29,582	27.5%
PORTUGAL	2,051	2,930	-30.0%	23,869	30,460	-21.6%
ROMANIA	1,261	761	65.7%	8,596	5,558	54.7%
SLOVAKIA	763	613	24.5%	6,359	6,434	-1.2%
SLOVENIA	545	445	22.5%	5,377	3,896	38.0%
SPAIN	7,204	6,437	11.9%	83,716	89,320	-6.3%
SWEDEN	4,619	3,471	33.1%	34,269	27,201	26.0%
UNITED KINGDOM	13,412	10,829	23.9%	188,054	155,265	21.1%
<b>EUROPEAN UNION<sup>1</sup></b>	<b>116,997</b>	<b>101,141</b>	<b>15.7%</b>	<b>1,261,244</b>	<b>1,125,146</b>	<b>12.1%</b>
<b>EUROPEAN UNION (EU15)</b>	<b>105,760</b>	<b>92,903</b>	<b>13.8%</b>	<b>1,171,677</b>	<b>1,057,349</b>	<b>10.8%</b>
<b>EU (New Members)</b>	<b>11,237</b>	<b>8,238</b>	<b>36.4%</b>	<b>89,567</b>	<b>67,797</b>	<b>32.1%</b>
ICELAND	33	33	0.0%	237	198	19.7%
NORWAY	3,476	2,910	19.5%	26,422	22,481	17.5%
SWITZERLAND	2,526	2,246	12.5%	22,245	19,001	17.1%
<b>EFTA</b>	<b>6,035</b>	<b>5,189</b>	<b>16.3%</b>	<b>48,904</b>	<b>41,680</b>	<b>17.3%</b>
<b>TOTAL EUROPE (EU+EFTA)</b>	<b>123,032</b>	<b>106,330</b>	<b>15.7%</b>	<b>1,310,148</b>	<b>1,166,826</b>	<b>12.3%</b>
<b>EU15+EFTA</b>	<b>111,795</b>	<b>98,092</b>	<b>14.0%</b>	<b>1,220,581</b>	<b>1,099,029</b>	<b>11.1%</b>

(<sup>1</sup>) EU27 including Bulgaria and Romania; data for Malta and Cyprus currently not available.

(<sup>2</sup>) Due to the unavailability of data from Italy since January 2011, figures reported for that country are an extrapolation made by data provider AAA. They are not actual market figures, hence the possibility of an error margin with regard to the EU totals.

(\*) estimates

For further information, please call: Ms. Quynh-Nhu Huynh - Manager Economics & Communications - Tel. + 32 2 738 73 55



This information is available on the ACEA website:

<http://www.acea.be>



ACEA

Association des  
Constructeurs  
Européens  
d'Automobiles

Av. des Nerviens 85  
B-1040 Bruxelles

Tel (32 2) 732 55 50  
Fax (32 2) 738 73 10  
(32 2) 738 73 11

# Press Release

**PRESS EMBARGO FOR ALL DATA :  
8.00 A.M.(6.00 A.M. GMT), September 29, 2011**

## PROVISIONAL EU<sup>1</sup> COUNTRIES REGISTRATION FIGURES BY MARKET NEW LIGHT COMMERCIAL VEHICLES up to 3.5t<sup>2</sup>

29/9/11

	July '11	July '10	% Change	Jan-Jul '11	Jan-Jul '10	% Change
AUSTRIA	2,628	2,521	4.2%	18,787	16,104	16.7%
BELGIUM	4,049	3,636	11.4%	39,806	34,038	16.9%
BULGARIA	164	204	-19.6%	1,285	1,509	-14.8%
CZECH REPUBLIC	855	706	21.1%	6,836	6,609	3.4%
DENMARK	1,457	962	51.5%	12,541	8,446	48.5%
ESTONIA	123	82	50.0%	1,015	547	85.6%
FINLAND	874	623	40.3%	7,893	5,944	32.8%
FRANCE	29,797	33,870	-12.0%	252,515	245,794	2.7%
GERMANY	19,120	15,814	20.9%	129,426	107,844	20.0%
GREECE	577	882	-34.6%	4,240	7,649	-44.6%
HUNGARY	756	852	-11.3%	5,553	4,652	19.4%
IRELAND	727	674	7.9%	8,901	7,904	12.6%
ITALY <sup>3</sup>	13,127	13,583	-3.4%	115,005	116,309	-1.1%
LATVIA	81	45	80.0%	630	232	171.6%
LITHUANIA	119	82	45.1%	917	358	156.1%
LUXEMBURG	283	314	-9.9%	2,062	1,978	4.2%
NETHERLANDS	4,139	3,855	7.4%	37,720	31,714	18.9%
POLAND	3,447	3,176	8.5%	22,891	20,473	11.8%
PORTUGAL	2,457	3,617	-32.1%	19,739	25,527	-22.7%
ROMANIA	954	549	73.8%	5,165	3,441	50.1%
SLOVAKIA	456	373	22.3%	3,231	4,386	-26.3%
SLOVENIA	453	385	17.7%	3,889	2,932	32.6%
SPAIN	8,762	9,059	-3.3%	65,581	74,569	-12.1%
SWEDEN	2,380	2,188	8.8%	25,207	20,049	25.7%
UNITED KINGDOM	17,162	17,309	-0.8%	150,400	124,579	20.7%
<b>EUROPEAN UNION<sup>1</sup></b>	<b>114,947</b>	<b>115,361</b>	<b>-0.4%</b>	<b>941,235</b>	<b>873,587</b>	<b>7.7%</b>
<b>EU 15</b>	<b>107,539</b>	<b>108,907</b>	<b>-1.3%</b>	<b>889,823</b>	<b>828,448</b>	<b>7.4%</b>
<b>EU 10</b>	<b>7,408</b>	<b>6,454</b>	<b>14.8%</b>	<b>51,412</b>	<b>45,139</b>	<b>13.9%</b>
ICELAND	19	16	18.8%	155	135	14.8%
NORWAY	2,318	2,093	10.8%	19,248	16,333	17.8%
SWITZERLAND	2,191	2,108	3.9%	16,794	14,308	17.4%
<b>EFTA</b>	<b>4,528</b>	<b>4,217</b>	<b>7.4%</b>	<b>36,197</b>	<b>30,776</b>	<b>17.6%</b>
<b>EU27 + EFTA</b>	<b>119,475</b>	<b>119,578</b>	<b>-0.1%</b>	<b>977,432</b>	<b>904,363</b>	<b>8.1%</b>
<b>EU15 + EFTA</b>	<b>112,067</b>	<b>113,124</b>	<b>-0.9%</b>	<b>926,020</b>	<b>859,224</b>	<b>7.8%</b>

(<sup>1</sup>) EU27 including Bulgaria and Romania; data for Malta and Cyprus currently not available.

(<sup>2</sup>) including Buses & Coaches

(<sup>3</sup>) Due to the unavailability of data from Italy since January 2011, figures reported for that country are an extrapolation made by data provider AAA.

They are not actual market figures, hence the possibility of an error margin with regard to the EU totals.

For further information, please call: Ms. Quynh-Nhu Huynh - Manager Economics & Communications - Tel. + 32 2 738 73 55

This information is available on the ACEA website:

<http://www.acea.be>

**Next Press Release on Commercial Vehicles to be issued on October 27, 2011**





ACEA

Association des  
Constructeurs  
Européens  
d'Automobiles

Av. des Nerviens 85  
B-1040 Bruxelles

Tel (32 2) 732 55 50  
Fax (32 2) 738 73 10  
(32 2) 738 73 11

# Press Release

**PRESS EMBARGO FOR ALL DATA :  
8.00 A.M.(6.00 A.M. GMT), September 29, 2011**

## PROVISIONAL

### EU<sup>1</sup> + EFTA COUNTRIES REGISTRATION FIGURES BY MARKET NEW HEAVY COMMERCIAL VEHICLES of 16t and over<sup>2</sup>

29/9/11

	July '11	July '10	% Change	Jan-Jul '11	Jan-Jul '10	% Change
AUSTRIA	578	444	30.2%	4,147	2,669	55.4%
BELGIUM	493	352	40.1%	5,149	3,284	56.8%
BULGARIA	47	39	20.5%	642	208	208.7%
CZECH REPUBLIC <sup>3</sup>	429	200	114.5%	3,429	1,839	86.5%
DENMARK	190	159	19.5%	1,921	1,017	88.9%
ESTONIA	38	29	31.0%	377	129	192.2%
FINLAND	162	124	30.6%	1,377	1,016	35.5%
FRANCE	3,258	2,329	39.9%	24,373	15,337	58.9%
GERMANY	5,097	4,468	14.1%	35,392	25,677	37.8%
GREECE	36	65	-44.6%	190	393	-51.7%
HUNGARY	303	144	110.4%	2,008	899	123.4%
IRELAND	67	68	-1.5%	542	445	21.8%
ITALY <sup>4</sup>	1,174	1,105	6.2%	8,017	6,906	16.1%
LATVIA	104	44	136.4%	713	153	366.0%
LITHUANIA <sup>5</sup>	201	138	45.7%	1,678	503	233.6%
LUXEMBURG <sup>5</sup>	109	71	53.5%	694	396	75.3%
NETHERLANDS	794	580	36.9%	6,919	4,908	41.0%
POLAND	1,037	675	53.6%	8,326	3,913	112.8%
PORTUGAL	135	228	-40.8%	1,420	1,229	15.5%
ROMANIA	316	139	127.3%	1,864	881	111.6%
SLOVAKIA	184	98	87.8%	1,914	870	120.0%
SLOVENIA <sup>5</sup>	74	31	138.7%	776	305	154.4%
SPAIN	1,110	1,009	10.0%	8,625	6,485	33.0%
SWEDEN	332	243	36.6%	2,933	2,267	29.4%
UNITED KINGDOM	2,362	1,614	46.3%	14,984	9,310	60.9%
<b>EUROPEAN UNION<sup>1</sup></b>	<b>18,630</b>	<b>14,396</b>	<b>29.4%</b>	<b>138,410</b>	<b>91,039</b>	<b>52.0%</b>
<b>EUROPEAN UNION (EU15)</b>	<b>15,897</b>	<b>12,859</b>	<b>23.6%</b>	<b>116,683</b>	<b>81,339</b>	<b>43.5%</b>
<b>EU (New Members)</b>	<b>2,733</b>	<b>1,537</b>	<b>77.8%</b>	<b>21,727</b>	<b>9,700</b>	<b>124.0%</b>
ICELAND	5	1	400.0%	16	14	14.3%
NORWAY <sup>5</sup>	233	171	36.3%	1,865	1,390	34.2%
SWITZERLAND <sup>3</sup>	276	201	37.3%	2,046	1,595	28.3%
EFTA	514	373	37.8%	3,927	2,999	30.9%
<b>TOTAL EUROPE (EU+EFTA)</b>	<b>19,144</b>	<b>14,769</b>	<b>29.6%</b>	<b>142,337</b>	<b>94,038</b>	<b>51.4%</b>
<b>EU15+EFTA</b>	<b>16,411</b>	<b>13,232</b>	<b>24.0%</b>	<b>120,610</b>	<b>84,338</b>	<b>43.0%</b>

(<sup>1</sup>) EU27 including Bulgaria and Romania; data for Malta and Cyprus currently not available.

(<sup>2</sup>) Excluding Buses and Coaches

(<sup>3</sup>) CV ≥ 18t

(<sup>4</sup>) Due to the unavailability of data from Italy since January 2011, figures reported for that country are an extrapolation made by data provider AAA. They are not actual market figures, hence the possibility of an error margin with regard to the EU totals.

(<sup>5</sup>) estimates

For further information, please call: Ms. Quynh-Nhu Huynh - Manager Economics & Communications - Tel. + 32 2 738 73 55

This information is available on the ACEA website:

<http://www.acea.be>



ACEA

Association des  
Constructeurs  
Européens  
d'Automobiles

Av. des Nerviens 85  
B-1040 Bruxelles

Tel (32 2) 732 55 50  
Fax (32 2) 738 73 10  
(32 2) 738 73 11

# Press Release

**PRESS EMBARGO FOR ALL DATA :  
8.00 A.M.(6.00 A.M. GMT), September 29, 2011**

## PROVISIONAL

### EU<sup>1</sup> + EFTA COUNTRIES REGISTRATION FIGURES BY MARKET NEW MEDIUM & HEAVY COMMERCIAL VEHICLES over 3.5t<sup>2</sup>

29/9/11

	July '11	July '10	% Change	Jan-Jul '11	Jan-Jul '10	% Change
AUSTRIA	629	514	22.4%	4,548	2,999	51.7%
BELGIUM	634	496	27.8%	6,403	4,619	38.6%
BULGARIA	56	46	21.7%	711	397	79.1%
CZECH REPUBLIC	552	262	110.7%	4,376	2,643	65.6%
DENMARK	214	202	5.9%	2,150	1,338	60.7%
ESTONIA	43	35	22.9%	422	156	170.5%
FINLAND	243	189	28.6%	1,973	1,526	29.3%
FRANCE	4,083	3,019	35.2%	30,376	20,298	49.7%
GERMANY	8,200	7,259	13.0%	56,340	42,130	33.7%
GREECE	56	120	-53.3%	354	903	-60.8%
HUNGARY	343	168	104.2%	2,204	1,063	107.3%
IRELAND	84	101	-16.8%	743	749	-0.8%
ITALY <sup>4</sup>	1,707	1,694	0.8%	11,767	10,657	10.4%
LATVIA	112	46	143.5%	755	169	346.7%
LITHUANIA <sup>3</sup>	220	149	47.7%	1,742	536	225.0%
LUXEMBURG	131	87	50.6%	777	442	75.8%
NETHERLANDS	906	709	27.8%	7,931	5,881	34.9%
POLAND	1,211	903	34.1%	9,732	4,897	98.7%
PORTUGAL	174	340	-48.8%	1,838	1,691	8.7%
ROMANIA	340	168	102.4%	2,094	1,129	85.5%
SLOVAKIA	213	140	52.1%	2,240	1,160	93.1%
SLOVENIA <sup>3</sup>	80	57	40.4%	877	422	107.8%
SPAIN	1,174	1,110	5.8%	9,159	6,987	31.1%
SWEDEN	382	308	24.0%	3,347	2,651	26.3%
UNITED KINGDOM	3,429	2,478	38.4%	21,251	15,545	36.7%
<b>EUROPEAN UNION<sup>1</sup></b>	<b>25,216</b>	<b>20,600</b>	<b>22.4%</b>	<b>184,110</b>	<b>130,988</b>	<b>40.6%</b>
<b>EUROPEAN UNION (EU15)</b>	<b>22,046</b>	<b>18,626</b>	<b>18.4%</b>	<b>158,957</b>	<b>118,416</b>	<b>34.2%</b>
<b>EU (New Members)</b>	<b>3,170</b>	<b>1,974</b>	<b>60.6%</b>	<b>25,153</b>	<b>12,572</b>	<b>100.1%</b>
ICELAND	7	3	133.3%	26	17	52.9%
NORWAY	452	346	30.6%	3,154	2,481	27.1%
SWITZERLAND	393	291	35.1%	2,657	2,151	23.5%
EFTA	852	640	33.1%	5,837	4,649	25.6%
<b>TOTAL EUROPE (EU+EFTA)</b>	<b>26,068</b>	<b>21,240</b>	<b>22.7%</b>	<b>189,947</b>	<b>135,637</b>	<b>40.0%</b>
<b>EU15+EFTA</b>	<b>22,898</b>	<b>19,266</b>	<b>18.9%</b>	<b>164,794</b>	<b>123,065</b>	<b>33.9%</b>

(<sup>1</sup>) EU27 including Bulgaria and Romania; data for Malta and Cyprus currently not available.

(<sup>2</sup>) Excluding Buses and Coaches

(<sup>3</sup>) estimates

(<sup>4</sup>) Due to the unavailability of data from Italy since January 2011, figures reported for that country are an extrapolation made by data provider AAA. They are not actual market figures, hence the possibility of an error margin with regard to the EU totals.

For further information, please call: Ms. Quynh-Nhu Huynh - Manager Economics & Communications - Tel. + 32 2 738 73 55

This information is available on the ACEA website:

<http://www.acea.be>



ACEA

Association des  
Constructeurs  
Européens  
d'Automobiles

Av. des Nerviens 85  
B-1040 Bruxelles

Tel (32 2) 732 55 50  
Fax (32 2) 738 73 10  
(32 2) 738 73 11

# Press Release

**PRESS EMBARGO FOR ALL DATA :  
8.00 A.M.(6.00 A.M. GMT), September 29, 2011**

## PROVISIONAL

### EU<sup>1</sup> + EFTA COUNTRIES REGISTRATION FIGURES BY MARKET NEW MEDIUM & HEAVY BUSES & COACHES over 3.5t

29/9/11

	July '11	July '10	% Change	Jan-Jul '11	Jan-Jul '10	% Change
AUSTRIA	42	18	133.3%	350	389	-10.0%
BELGIUM	28	67	-58.2%	487	663	-26.5%
BULGARIA	3	3	0.0%	15	46	-67.4%
CZECH REPUBLIC	54	33	63.6%	392	339	15.6%
DENMARK	30	111	-73.0%	198	373	-46.9%
ESTONIA	2	5	-60.0%	29	39	-25.6%
FINLAND	33	38	-13.2%	205	273	-24.9%
FRANCE	568	529	7.4%	3,239	3,254	-0.5%
GERMANY	362	347	4.3%	2,612	2,518	3.7%
GREECE	11	27	-59.3%	62	122	-49.2%
HUNGARY	26	30	-13.3%	129	134	-3.7%
IRELAND	2	2	0.0%	57	44	29.5%
ITALY <sup>3</sup>	494	448	10.3%	3,425	2,545	34.6%
LATVIA	23	2	1050.0%	136	10	1260.0%
LITHUANIA <sup>2</sup>	1	3	-66.7%	31	26	19.2%
LUXEMBURG	14	8	75.0%	140	140	0.0%
NETHERLANDS	47	24	95.8%	280	290	-3.4%
POLAND	78	92	-15.2%	766	608	26.0%
PORTUGAL	22	33	-33.3%	241	312	-22.8%
ROMANIA	19	3	533.3%	76	227	-66.5%
SLOVAKIA	28	29	-3.4%	125	275	-54.5%
SLOVENIA <sup>2</sup>	5	6	-16.7%	66	97	-32.0%
SPAIN	154	184	-16.3%	1,772	1,327	33.5%
SWEDEN	171	126	35.7%	1,096	1,030	6.4%
UNITED KINGDOM	315	465	-32.3%	2,991	4,312	-30.6%
<b>EUROPEAN UNION<sup>1</sup></b>	<b>2,532</b>	<b>2,633</b>	<b>-3.8%</b>	<b>18,920</b>	<b>19,393</b>	<b>-2.4%</b>
<b>EUROPEAN UNION (EU15)</b>	<b>2,293</b>	<b>2,427</b>	<b>-5.5%</b>	<b>17,155</b>	<b>17,592</b>	<b>-2.5%</b>
<b>EU (New Members)</b>	<b>239</b>	<b>206</b>	<b>16.0%</b>	<b>1,765</b>	<b>1,801</b>	<b>-2.0%</b>
ICELAND	1	4	-75.0%	23	13	76.9%
NORWAY	91	97	-6.2%	544	757	-28.1%
SWITZERLAND	49	54	-9.3%	268	296	-9.5%
<b>EFTA</b>	<b>141</b>	<b>155</b>	<b>-9.0%</b>	<b>835</b>	<b>1,066</b>	<b>-21.7%</b>
<b>TOTAL EUROPE (EU+EFTA)</b>	<b>2,673</b>	<b>2,788</b>	<b>-4.1%</b>	<b>19,755</b>	<b>20,459</b>	<b>-3.4%</b>
<b>EU15+EFTA</b>	<b>2,434</b>	<b>2,582</b>	<b>-5.7%</b>	<b>17,990</b>	<b>18,658</b>	<b>-3.6%</b>

(<sup>1</sup>) EU27 including Bulgaria and Romania; data for Malta and Cyprus currently not available.

(<sup>2</sup>) estimates

(<sup>3</sup>) Due to the unavailability of data from Italy since January 2011, figures reported for that country are an extrapolation made by data provider AAA. They are not actual market figures, hence the possibility of an error margin with regard to the EU totals.

For further information, please call: Ms. Quynh-Nhu Huynh - Manager Economics & Communications - Tel. + 32 2 738 73 55

This information is available on the ACEA website:

<http://www.acea.be>



ACEA

Association des  
Constructeurs  
Européens  
d'Automobiles

Av. des Nerviens 85  
B-1040 Bruxelles

Tel (32 2) 732 55 50  
Fax (32 2) 738 73 10  
(32 2) 738 73 11

# Press Release

**PRESS EMBARGO FOR ALL DATA :  
8.00 A.M.(6.00 A.M. GMT), September 29, 2011**

## PROVISIONAL EU<sup>1</sup> + EFTA COUNTRIES REGISTRATION FIGURES BY MARKET TOTAL NEW COMMERCIAL VEHICLES

29/9/11

	July '11	July '10	% Change	Jan-Jul '11	Jan-Jul '10	% Change
AUSTRIA	3,299	3,053	8.1%	23,685	19,492	21.5%
BELGIUM	4,711	4,199	12.2%	46,696	39,320	18.8%
BULGARIA	223	253	-11.9%	2,011	1,952	3.0%
CZECH REPUBLIC	1,461	1,001	46.0%	11,604	9,591	21.0%
DENMARK	1,701	1,275	33.4%	14,889	10,157	46.6%
ESTONIA	168	122	37.7%	1,466	742	97.6%
FINLAND	1,150	850	35.3%	10,071	7,743	30.1%
FRANCE	34,448	37,418	-7.9%	286,130	269,346	6.2%
GERMANY	27,682	23,420	18.2%	188,378	152,492	23.5%
GREECE	644	1,029	-37.4%	4,656	8,674	-46.3%
HUNGARY	1,125	1,050	7.1%	7,886	5,849	34.8%
IRELAND	813	777	4.6%	9,701	8,697	11.5%
ITALY <sup>2</sup>	15,328	15,725	-2.5%	130,197	129,511	0.5%
LATVIA	216	93	132.3%	1,521	411	270.1%
LITHUANIA	340	234	45.3%	2,690	920	192.4%
LUXEMBURG	428	409	4.6%	2,979	2,560	16.4%
NETHERLANDS	5,092	4,588	11.0%	45,931	37,885	21.2%
POLAND	4,736	4,171	13.5%	33,389	25,978	28.5%
PORTUGAL	2,653	3,990	-33.5%	21,818	27,530	-20.7%
ROMANIA	1,313	720	82.4%	7,335	4,797	52.9%
SLOVAKIA	697	542	28.6%	5,596	5,821	-3.9%
SLOVENIA	538	448	20.1%	4,832	3,451	40.0%
SPAIN	10,090	10,353	-2.5%	76,512	82,883	-7.7%
SWEDEN	2,933	2,622	11.9%	29,650	23,730	24.9%
UNITED KINGDOM	20,906	20,252	3.2%	174,642	144,436	20.9%
<b>EUROPEAN UNION<sup>1</sup></b>	<b>142,695</b>	<b>138,594</b>	<b>3.0%</b>	<b>1,144,265</b>	<b>1,023,968</b>	<b>11.7%</b>
<b>EUROPEAN UNION (EU15)</b>	<b>131,878</b>	<b>129,960</b>	<b>1.5%</b>	<b>1,065,935</b>	<b>964,456</b>	<b>10.5%</b>
<b>EU (New Members)</b>	<b>10,817</b>	<b>8,634</b>	<b>25.3%</b>	<b>78,330</b>	<b>59,512</b>	<b>31.6%</b>
ICELAND	27	23	17.4%	204	165	23.6%
NORWAY	2,861	2,536	12.8%	22,946	19,571	17.2%
SWITZERLAND	2,633	2,453	7.3%	19,719	16,755	17.7%
<b>EFTA</b>	<b>5,521</b>	<b>5,012</b>	<b>10.2%</b>	<b>42,869</b>	<b>36,491</b>	<b>17.5%</b>
<b>TOTAL EUROPE (EU+EFTA)</b>	<b>148,216</b>	<b>143,606</b>	<b>3.2%</b>	<b>1,187,134</b>	<b>1,060,459</b>	<b>11.9%</b>
<b>EU15+EFTA</b>	<b>137,399</b>	<b>134,972</b>	<b>1.8%</b>	<b>1,108,804</b>	<b>1,000,947</b>	<b>10.8%</b>

(<sup>1</sup>) EU27 including Bulgaria and Romania; data for Malta and Cyprus currently not available.

(<sup>2</sup>) Due to the unavailability of data from Italy since January 2011, figures reported for that country are an extrapolation made by data provider AAA. They are not actual market figures, hence the possibility of an error margin with regard to the EU totals.

(\*) estimates

For further information, please call: Ms. Quynh-Nhu Huynh - Manager Economics & Communications - Tel. + 32 2 738 73 55

This information is available on the ACEA website:

<http://www.acea.be>